



# CATALOGUE



[WWW.AMADORI.IT](http://WWW.AMADORI.IT)















## A HISTORY OF GROWTH

The Amadori story started in the 1930s in Romagna, selling poultry and barnyard animals, and from there it has grown into one of Italy's largest food producers. It has been a **story of continuous growth, built on the passion of a family, and careful leadership of a management team tuned into** the market and its evolutions.

**With solid roots and a vision for the future, Amadori is one of Italy's largest food businesses, a modern food company with a reputation for quality, food safety and transparency.**

## AMADORI TODAY

-  6 food processing plants
-  6 hatcheries
-  5 feed mills
-  3 primary logistic platforms
-  19 distribution centres, comprising branches and agencies
-  Over 800 farms, both group-owned and in partnership
-  Over 7,850 employees
-  € 1,200 million+ turnover





## CUSTOMERS ARE KEY

Satisfied customers make for strong, healthy companies. This means their needs are always front and centre of our operations. We work across a number of different channels, **from supermarkets and large-scale organised distribution to traditional retail, the food service industry, wholesale and export trade**, each of which have different requirements in terms of products, service and logistics. We put every effort into turning our commercial relationships into veritable business partnerships.

The **broad range** we have developed includes

unique specialities like Il Campese, a line of free-range chicken reared outdoors with no antibiotics and with almost no direct competitors, and other **products and ready meals** that meet the needs of contemporary consumers who value quality, service and variety, and not just price when they're looking for menu ideas.

At the commercial, industrial and logistical level, our organisation structure allows us to **deliver our products to the greatest number of sales outlets in the shortest time** and under the best conditions, even on the same day.

This is the only way to safeguard the goodness and freshness of products with a short shelf-life and make sure consumers recognize these qualities and want to buy them again in the future, seeing **Amadori as a guarantee in the Italian poultry sector**.

This commitment has always paid off, earning us the respect of our current partners and gaining new ones every year, driving us not only to uphold our operating standards but also to improve them.



# BIO

## 100% ITALIAN CHICKEN



ORGANIC CHICKEN  
IS REARED OUTDOORS  
AND FED ON  
GRAINS AND PULSES  
FROM ORGANIC FARMING



GUSTO PREMIATO  
DAI CONSUMATORI\*\*



# NEW PRODUCTS ADDED EXCELLENT IN EVERY POSSIBLE WAY

Free-range, slow-growth, 100% Italian, antibiotic-free chicken, reared outside on a plant-based, GMO-free diet: Il Campese is ideal as part of a healthy lifestyle and for consumers seeking wholesome, tasty food.

Il Campese is raised with extra care and tastes extra special as a result; it comes in a variety of formats to provide options for both culinary whizzes and those looking for something quick and easy for dinner.



100% ITALIANO

ALIMENTAZIONE VEGETALE NO OGM\*  
LAVORATO CON ENERGIA RINNOVABILE

\*MIN. AUTH. IT001EA-UNAITALIA

\*\*PRIZE-WINNING FLAVOUR: according to 300 consumers who took part in a sensory test in compliance with UNI EN ISO 13299:20, Consumer Test - Quality Award.  
See [www.amadori.it](http://www.amadori.it) for more information.





PRESENTS



**QUALITÀ 10+**  
ORIGINE ITALIANA

**POLLO E TACCHINO  
ALLEVATI A TERRA  
SENZA USO DI ANTIBIOTICI\***

\*AUT. MIN. IT001EA-UNAITALIA



## **10+ QUALITY ITALIAN ORIGIN GROUND-RAISED CHICKEN AND TURKEY WITH NO ANTIBIOTICS**

Fed on GMO-free, fully-vegetable feeds, containing no flour or fat of animal, **10+ Quality chicken and turkey** are ground-raised and with no antibiotics.

A “no” that makes all the difference, responding to the priorities of today’s consumers who are more aware of and place more value in the quality and safety of the food they eat.

\*Writings as  
AUT. MIN. IT001EA-UNAITALIA





# TUTTI D'UN PEZZO



## QUALITÀ 10<sup>+</sup>

**POLLO ALLEVATO A TERRA  
SENZA USO DI ANTIBIOTICI**

ALIMENTAZIONE NO OGM VEGETALE



### ALL IN ONE PIECE

Ground-raised chicken with no antibiotics  
GMO-free, fully-vegetable feed

An original range of cooked products: tasty breaded goods and light grilled fillets, all premium, natural cuts, 10+ Quality chicken cuts from birds reared on the barn floor with no antibiotics and fed with fully-vegetable, GMO-free feed.

Ready to eat in a matter of minutes, they are ideal for quality meals that are rich in protein and a source of niacin (vitamin B3) that are also quick and easy to make.

**100% ITALIAN CHICKEN**





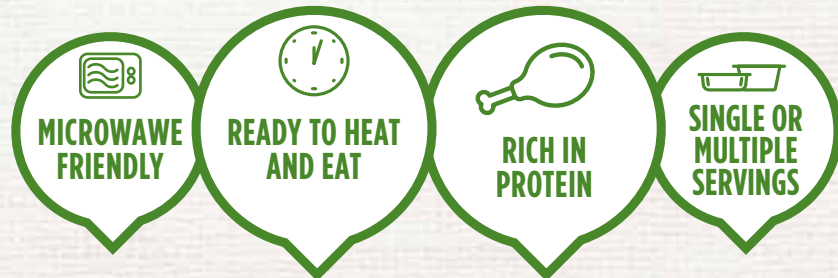
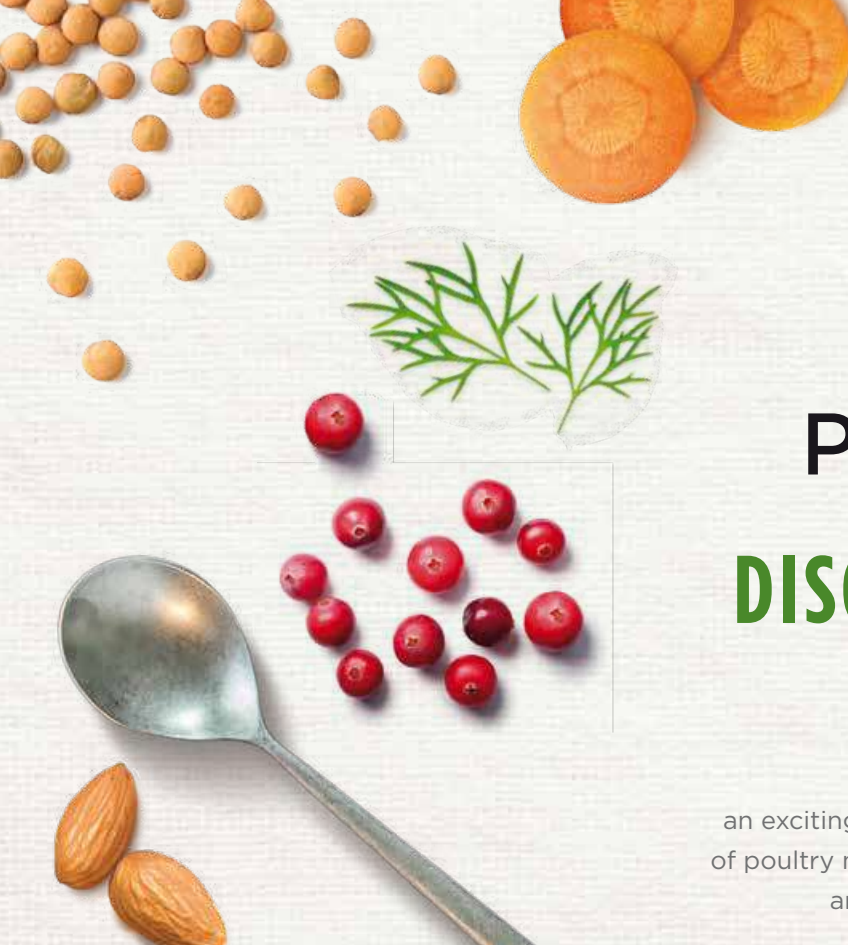


# PENSATI per VOI

## DISCOVER THE ALL-NEW RECIPE RANGE:

### MADE for YOU

an exciting assortment of tasty meals, combining the lightness of poultry meats, the natural goodness of vegetables and grains, and the special touch of selected ingredients.







QUALITÀ 10+

POLLO E TACCHINO ALLEVATI A TERRA SENZA USO DI ANTIBIOTICI



100% WITH 10+ QUALITY, 100% IS EVER MORE POPULAR!

100% FRANKFURTER

Ground-raised chicken and turkey with no antibiotics

We listened to consumers seeking out balanced, healthy foods and raised the quality of our Amadori 100% frankfurters accordingly, renewing the recipes for our 10+ Quality chicken and turkey products, all raised without the use of antibiotics. All Amadori 100% frankfurters are made with ground not mechanically separated meat, with no added polyphosphates, no monosodium glutamate, and are both gluten and lactose-free.



With Quality 10+ chicken and turkey, raised without antibiotics: for people who like to eat well with taste.



EVVIVA! Tutta la bontà del wurstel italiano

NEW RECIPE TASTIER THAN EVER!

NO ADDED POLYPHOSPHATES NO MONOSODIUM GLUTAMATE GLUTEN-FREE

EVVIVA!

All the natural goodness of an Italian frankfurter

We listened to consumers who love good food and good living and look for tasty, high quality products that are also quick and easy to cook and renewed our much-loved Evviva chicken and turkey frankfurters, introducing a tasty new recipe with no monosodium glutamate and no added polyphosphates.

No monosodium glutamate and no added polyphosphates, with all the goodness of 100% Italian chicken and turkey: for people who like to make dinner time special!







# MAIN



01	02	03	04	05	06	07	08	09	10	11	12	13	14	15	16	17	18	19	20
AMADORI BIO	IL CAMPESE	QUALITÀ 10+	FRESH, UNCOOKED SPECIALITIES	FRESH, UNCOOKED PORK	MEATLOAF ROLLS	TUTTI D'UN PEZZO	BREADED	READY TO-EAT	ROASTS	VEGETABLE SPECIALITIES	PENSATI PER VOI	FRANK-FURTERS	TRADITIONALS	OTHER POULTRY PRODUCTS	HALAL PRODUCTS	EGGS	MISTER MEAT	CORTE ANTICA	FROZEN
PAG. 2	PAG. 4	PAG. 8	PAG. 18	PAG. 26	PAG. 28	PAG. 30	PAG. 32	PAG. 38	PAG. 40	PAG. 44	PAG. 45	PAG. 51	PAG. 56	PAG. 62	PAG. 66	PAG. 72	PAG. 82	PAG. 96	PAG. 98



# AMADORI BIO

# ORGANIC FREE-RANGE CHICKEN

retail



Sliced chicken breast BIO retail

	EAN Code	Approx. package kg	Pieces per package	Packages per carton	Approx. carton weight (kg)	Shelf life (days)
16802	2986338000000	0,27	4	6	1,62	8

Chicken tenderloin BIO retail

	EAN Code	Approx. package kg	Pieces per package	Packages per carton	Approx. carton weight (kg)	Shelf life (days)
16803	2567113000000	0,33	5	6	1,98	8

Organic free-range chicken, able to roam freely outdoors in large, uncontaminated organic pastures, 100% Italian, fed entirely on pulses and grains like wheat, corn, sorghum and soya from Organic Farming. Amadori ORGANIC chicken comes in the finest traditional cuts and in original, flavoursome uncooked specialties like burgers and meatballs.





# AMADORI BIO

# ORGANIC FREE-RANGE CHICKEN

retail



**Chicken drumsticks x2 BIO retail**

	EAN Code	Approx. package kg	Pieces per package	Packages per carton	Approx. carton weight (kg)	Shelf life (days)
16800	2794232000000	0,4	2	6	2,4	8

**Chicken thigh x2 BIO retail**

	EAN Code	Approx. package kg	Pieces per package	Packages per carton	Approx. carton weight (kg)	Shelf life (days)
16801	2369511000000	0,55	2	6	3,3	8



**Chicken burgers 80g x2 BIO retail**

	EAN Code	Approx. package kg	Pieces per package	Packages per carton	Approx. carton weight (kg)	Shelf life (days)
16804	8006473904298	0,16	2	6	0,96	9

**Chicken metaballs BIO retail**

	EAN Code	Approx. package kg	Pieces per package	Packages per carton	Approx. carton weight (kg)	Shelf life (days)
16805	8006473904304	0,24	12	6	1,44	8





# IL CAMPESE

FREE-RANGE CHICKEN,  
REARED OUTDOORS WITH NO ANTIBIOTICS

retail

maxi



ALLUMINIUM  
TRAY  
READY TO  
BAKE



ALLUMINIUM  
TRAY  
READY TO  
BAKE

Whole Chicken **retail**

	EAN Code	Approx. package kg	Pieces per package	Packages per carton	Approx. carton weight (kg)	Shelf life (days)
<b>16080</b>	2521600	1,025	1	4	4,1	9

Chicken pieces **retail**

	EAN code	Approx. package kg	Pieces per package	Packages per carton	Approx. carton weight (kg)	Shelf life (days)
<b>16924</b>	2612597	0,60	6	6	3,6	9



Reared outdoors with no antibiotics on a plant-based, GMO-free diet, 100% Italian, slow-growth: this unique combination of features gives Il Campese an unmistakable taste which consumers have recognized and awarded. Excellent in every possible way, combining the search for tasty, wholesome food as part of a healthy lifestyle, available in multiple options for those who have time to cook or who need a ready-to-serve or easy-cook dish.

\*MIN. AUTH. IT001EA-UNAITALIA





# IL CAMPESE

FREE-RANGE CHICKEN,  
REARED OUTDOORS WITH NO ANTIBIOTICS

retail

maxi



Chicken tenders **retail**

	EAN code	Approx. package kg	Pieces per package	Packages per carton	Approx. carton weight (kg)	Shelf life (days)
16926	8006473905141	0,30	1	6	1,8	9



Aromatised butterfly chicken thighs **retail**

	EAN code	Approx. package kg	Pieces per package	Packages per carton	Approx. carton weight (kg)	Shelf life (days)
16925	8006473905158	0,25	3	6	1,5	9



Ground chicken **retail**

	EAN code	Approx. package kg	Pieces per package	Packages per carton	Approx. carton weight (kg)	Shelf life (days)
16912	8006473903369	0,20	-	6	1,2	9



Chicken thigh strips, cooked **retail**

	EAN code	Approx. package kg	Pieces per package	Packages per carton	Approx. carton weight (kg)	Shelf life (days)
41725	8006473905165	0,25	-	6	1,5	12



Chicken wings, cooked **retail**

	EAN code	Approx. package kg	Pieces per package	Packages per carton	Approx. carton weight (kg)	Shelf life (days)
41726	8006473905172	0,40	-	6	2,4	12



Free-range whole chicken, cooked **maxi**

	EAN code	Approx. package kg	Pieces per package	Packages per carton	Approx. carton weight (kg)	Shelf life (days)
41311	-	1,6	2	4	6,4	20

Chicken wings, cooked **maxi**

	EAN code	Approx. package kg	Pieces per package	Packages per carton	Approx. carton weight (kg)	Shelf life (days)
41306	-	1	29	4	4	17





# IL CAMPESE

# FREE-RANGE CHICKEN, REARED OUTDOORS WITH NO ANTIBIOTICS

bulk



Whole chicken, giblets **bulk**

	Description	Approx. package kg	Pieces per package	Pack. per carton	Approx. carton weight (kg)	Shelf life (days)
<b>16017</b>	Free-range chicken x4 with head and legs, giblets removed fr a	2	4	1	8	12

Whole chicken **bulk**

	Description	Approx. package kg	Pieces per package	Pack. per carton	Approx. carton weight (kg)	Shelf life (days)
<b>16012</b>	Whole, free-range seasoned chicken, in units	1,20	1	10	12,00	12
<b>16010</b>	Free-range, whole roast chicken fr a	1,25	9	1	11,25	12
<b>16013</b>	Free-range, whole seasoned chicken fr a	1,25	1	10	12,50	12
<b>16009</b>	Free-range, whole chicken, 1000g fr a	0,99	10	1	9,875	12
<b>16913</b>	Free-range, whole chicken, 1,5 fr a	1,25	8	1	11,6	12
<b>16015</b>	Free-range, whole chicken x8 fr a	1,55	8	1	12,40	12
<b>16014</b>	Free-range, whole chicken, dissected fr a	1,90	6	1	11,40	12





# IL CAMPESE

FREE-RANGE CHICKEN,  
REARED OUTDOORS WITH NO ANTIBIOTICS

maxi



### Chicken breast maxi

	Description	Approx. package kg	Pieces per package	Pack. per carton	Approx. carton weight (kg)	Shelf life (days)
16007	Free-range chicken breast maxi	2,40	9	4	9,6	12

### Chicken Thigh maxi

	Description	Approx. package kg	Pieces per package	Pack. per carton	Approx. carton weight (kg)	Shelf life (days)
16008	Free-range chicken thigh	2,6	10	2	5,2	10
16091	Free-range chicken thigh seasoned	1,56	6	4	6,24	10



### Chicken wings maxi

	Description	Approx. package kg	Pieces per package	Pack. per carton	Approx. carton weight (kg)	Shelf life (days)
16019	Free-range chicken wings maxi	2,5	23	2	5	10





QUALITÀ 10+

GROUND-RAISED CHICKEN  
WITH NO ANTIBIOTICS

retail

bulk



**POLLO ALLEVATO A TERRA  
SENZA USO DI ANTIBIOTICI\***

\*AUT.MIN. IT001EA-UNAITALIA

**Ground-raised chicken with no antibiotics**

Use of GMO-free, fully-vegetable feeds, containing no flour or fat of animal; chickens bred, reared and processed in Italy; full traceability throughout the production and supply chain; focus on animal welfare, with greater freedom of movement than legally required and hay bales to favour natural behaviour: in addition to these requisites, the 10+ Quality chicken range also guarantees no antibiotics are used thereby assuring the utmost quality of all products.



**Whole spatchcock chicken retail**

	EAN Code	Approx. package kg	Pieces per package	Packages per carton	Approx. carton weight (kg)	Shelf life (days)
16050	2266270	1	1	6	6	9



**Rotisserie chicken bulk**

	Description	Approx. package kg	Pieces per package	Approx. carton weight (kg)
10241	10+ Whole Chicken seasoned AF 1100	1,11	10	11,10
10243	10+ Whole Chicken seasoned AF 1000	1	10	10
10246	10+ Whole Chicken seasoned AF 1100 num	1,10	10	11
10247	10+ Whole Chicken seasoned AF 1000 num	1	10	10
10248	10+ Whole Chicken seasoned AF 1100 num (b+s)	1,10	10	11
10267	10+ Whole Chicken seasoned AF num(b+s)	1	10	10
16105	10+ Whole chicken 1000	1,00	10	10,00
16106	10+ Whole chicken 1100	1,11	10	11,10
16107	10+ Whole chicken 1200	1,21	10	12,10
16108	10+ Whole chicken 1300	1,33	9	11,97





**QUALITÀ 10+**

**GROUND-RAISED CHICKEN  
WITH NO ANTIBIOTICS**

retail

family

maxi



**Chicken breast x1 retail**

	EAN code	Approx. package kg	Pieces per package	Packages per carton	Approx. carton weight (kg)	Shelf life (days)
16203	2265000	0,5	1	8	4	9



**Sliced chicken breast retail**

	EAN code	Approx. package kg	Pieces per package	Packages per carton	Approx. carton weight (kg)	Shelf life (days)
16200	2522780	0,35	3	10	3,5	9
16201						
16086	2269032	0,30	3	10	3,00	9
16149						



**Sliced chicken breast family**

	EAN code	Approx. package kg	Pieces per package	Packages per carton	Approx. carton weight (kg)	Shelf life (days)
16047	2265650	0,70	7	9	6,30	9
16087						



**Sliced chicken breast maxi**

	EAN code	Approx. package kg	Pieces per package	Packages per carton	Approx. carton weight (kg)	Shelf life (days)
16165	2702462	1,17	13	4	4,68	8



**Chicken breast maxi**

	Description	Approx. package kg	Pieces per package	Packages per carton	Approx. carton weight (kg)	Shelf life (days)
16115	10+ chicken breast extra	3,00	6	4	12,00	12



**Thin-sliced chicken breast retail**

	EAN code	Pack. weight (kg)	Pieces per package	Packages per carton	Approx. carton weight (kg)	Shelf life (days)
16162	2350936	0,24	5	10	2,4	9

Corn-fed;





**QUALITÀ 10+**

**GROUND-RAISED CHICKEN  
WITH NO ANTIBIOTICS**

retail

maxi



**Scosciotte - sliced deboned chicken thighs retail**

	Description	Approx. package kg	Pieces per package	Packages per carton	Approx. carton weight (kg)	Shelf life (days)
16092	Pol sovr. s/p s/o stese 10+	0,4	3	8	3,20	7

**Chicken thigh pieces retail**

	EAN code	Approx. package kg	Pieces per package	Packages per carton	Approx. carton weight (kg)	Shelf life (days)
16029	2521330	0,9	9	4	4,20	9
16203	2265700	1,10	10	4	4,40	9



**Chicken leg quarter retail**

	EAN code	Approx. package kg	Pieces per package	Packages per carton	Approx. carton weight (kg)	Shelf life (days)
16202 SP	2265180	0,80	2	5	4,00	9
16028	2265270	0,56	2	6	3,36	9

**Chicken leg quarter, medium maxi**

	EAN code	Approx. package kg	Pieces per package	Packages per carton	Approx. carton weight (kg)	Shelf life (days)
16041	2522730	2,80	8	4	11,20	9

**Whole chicken leg, aromatised maxi**

	Description	Approx. package kg	Pieces per package	Packages per carton	Approx. carton weight (kg)	Shelf life (days)
16241	Whole 10+ chicken leg x 2, aromatised	2,8	7	2	5,6	10

**Chicken Thigh maxi**

	Description	Approx. package kg	Pieces per package	Packages per carton	Approx. carton weight (kg)	Shelf life (days)
16122	10+ chicken thigh maxi	2,52	9	2	5,04	10

SP: small package





**QUALITÀ 10+**

**GROUND-RAISED CHICKEN  
WITH NO ANTIBIOTICS**

retail

family

maxi



**Chicken thigh retail**

	EAN code	Approx. package kg	Pieces per package	Packages per carton	Approx. carton weight (kg)	Shelf life (days)
<b>16204 SP</b>	2265480	0,42	3	8	3,36	9
<b>16205 SP</b>	2269034	0,42	3	8	3,36	9



**Chicken thigh family**

	EAN code	Approx. package kg	Pieces per package	Packages per carton	Approx. carton weight (kg)	Shelf life (days)
<b>16033</b>	2265510	0,84	6	10	8,40	9



**Chicken thigh maxi**

	EAN code	Approx. package kg	Pieces per package	Packages per carton	Approx. carton weight (kg)	Shelf life (days)
<b>16045</b>	2265330	1,50	8	4	6,00	9



**Chicken thigh without skin retail**

	EAN code	Approx. package kg	Pieces per package	Packages per carton	Approx. carton weight (kg)	Shelf life (days)
<b>16074</b>	2521262	0,5	3	8	4	9

Corn-fed; SP: small package





**QUALITÀ 10+**

**GROUND-RAISED CHICKEN  
WITH NO ANTIBIOTICS**

retail

family

maxi



**Chicken drumsticks retail**

	EAN code	Approx. package kg	Pieces per package	Packages per carton	Approx. carton weight (kg)	Shelf life (days)
<b>16206 SP</b>	2265360	0,39	3	8	3,12	9
<b>16207 SP</b>						

**Chicken drumsticks family**

	EAN code	Approx. package kg	Pieces per package	Packages per carton	Approx. carton weight (kg)	Shelf life (days)
<b>16031</b>	2265390	0,78	6	10	7,80	9
<b>16085</b>	2265390	0,9	6	6	5,4	9

**Chicken drumsticks maxi**

	EAN code	Approx. package kg	Pieces per package	Packages per carton	Approx. carton weight (kg)	Shelf life (days)
<b>16044</b>	2265240	1,45	9	4	5,80	9



**Chicken wings retail**

	EAN code	Approx. package kg	Pieces per package	Packages per carton	Approx. carton weight (kg)	Shelf life (days)
<b>16035</b>	2265060	0,675	6	8	5,4	9

**Chicken wings maxi**

	Description	Approx. package kg	Pieces per package	Packages per carton	Approx. carton weight (kg)	Shelf life (days)
<b>16128</b>	10+ chicken wings, maxi	2,25	25	2	4,50	9

Corn-fed; SP: small package





**QUALITÀ 10+**

**GROUND-RAISED CHICKEN  
WITH NO ANTIBIOTICS**

retail

**FIXED  
WEIGHT**



**Thin-sliced chicken breast retail**

	EAN code	Approx. package kg	Pieces per package	Packages per carton	Approx. carton weight (kg)	Shelf life (days)
<b>16247</b>	8006473904243	0,25	6	9	2,25	9

**FIXED  
WEIGHT**



**Sliced chicken breast retail**

UM	EAN code	Approx. package kg	Pieces per package	Packages per carton	Approx. carton weight (kg)	Shelf life (days)
<b>16250</b>	nr 8006473901693	0,40	5	9	3,6	11

**FIXED  
WEIGHT**



**Chicken tenderloin retail**

UM	EAN code	Approx. package kg	Pieces per package	Packages per carton	Approx. carton weight (kg)	Shelf life (days)
<b>16253</b>	nr 8006473901723	0,40	6	8	3,20	11





**QUALITÀ 10+**

**GROUND-RAISED CHICKEN  
WITH NO ANTIBIOTICS**

retail

family

maxi



**Chicken thigh retail**

UM	EAN code	Approx. package kg	Pieces per package	Packages per carton	Approx. carton weight (kg)	Shelf life (days)
16252	nr 8006473901716	0,50	3	6	3,00	11



**Chicken drumsticks retail**

UM	EAN code	Approx. package kg	Pieces per package	Packages per carton	Approx. carton weight (kg)	Shelf life (days)
16251	nr 8006473901709	0,45	3	6	2,70	11



**Chicken thigh without skin family**

EAN code	Approx. package kg	Pieces per package	Packages per carton	Approx. carton weight (kg)	Shelf life (days)	
16248	8006473904250	0,45	3	6	2,7	9



**Chicken wings without skin maxi**

EAN code	Approx. package kg	Pieces per package	Packages per carton	Approx. carton weight (kg)	Shelf life (days)	
16249	8006473904267	0,55	5	8	4,4	9





**QUALITÀ 10+**

**NEW**

  
**QUALITÀ 10+**  
 ORIGINE ITALIANA

**TACCHINO ALLEVATO A TERRA  
 SENZA USO DI ANTIBIOTICI\***

\*AUT. MIN. IT001EA-UNAITALIA

**Ground-raised turkey with no antibiotics**

Fed on GMO-free, fully-vegetable feeds, containing no flour or fat of animal, 100% Italian, ground raised with no antibiotics: this is how Amadori 10+ Quality turkey is reared. Safety and full traceability guaranteed for all products in the range which meet the rising expectations of consumers, also with innovative packaging and new formats.



**GROUND-RAISED TURKEY  
 WITH NO ANTIBIOTICS**

retail

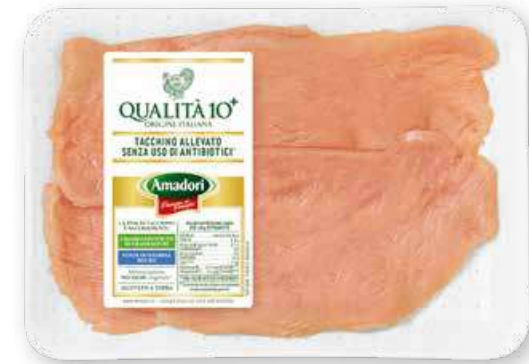
family

maxi



**Thin-sliced turkey breast retail**

	EAN code	Approx. package kg	Pieces per package	Packages per carton	Approx. carton weight (kg)	Shelf life (days)
16554	2817787	0,27	6	10	2,7	9



**Sliced turkey breast family**

	EAN code	Approx. package kg	Pieces per package	Packages per carton	Approx. carton weight (kg)	Shelf life (days)
16502	2521220	0,70	7	9	6,30	9

**Sliced turkey breast maxi**

	Description	Approx. package kg	Pieces per package	Packages per carton	Approx. carton weight (kg)	Shelf life (days)
16607	10+ sliced turkey breast, maxi	2,50	25	4	10,00	10



**Sliced turkey breast retail**

	EAN code	Approx. package kg	Pieces per package	Packages per carton	Approx. carton weight (kg)	Shelf life (days)
16551 SP	2265720	0,35	3	9	3,15	9
16553	2265720	0,35	3	9	3,15	9

SP: small package



**QUALITÀ 10+**

**GROUND-RAISED TURKEY  
WITH NO ANTIBIOTICS**

retail

maxi



**Turkey breast cuts retail**

	EAN code	Approx. package kg	Pieces per package	Packages per carton	Approx. carton weight (kg)	Shelf life (days)
<b>16500</b>	2265750	0,8	1	6	4,8	9



**Chunks of turkey meat retail**

	EAN code	Approx. package kg	Pieces per package	Packages per carton	Approx. carton weight (kg)	Shelf life (days)
<b>16561</b>	8006473904779	0,4	20	8	3,2	9



**Whole turkey breast maxi**

	Description	Approx. package kg	Pieces per package	Packages per carton	Approx. carton weight (kg)	Shelf life (days)
<b>16605</b>	Tac f fesa s.v. 10epiu'	4,40	2	4	17,60	20



**Sliced turkey breast retail**

UM	EAN code	Approx. package kg	Pieces per package	Packages per carton	Approx. carton weight (kg)	Shelf life (days)
<b>16270</b>	nr 8006473901686	0,4	6	9	3,6	11





**QUALITÀ 10+**

**GROUND-RAISED TURKEY  
WITH NO ANTIBIOTICS**

**retail**



SOURCE OF IODINE

**Ground turkey retail**

	EAN code	Approx. package kg	Pieces per package	Packages per carton	Approx. carton weight (kg)	Shelf life (days)
<b>11854</b>	8006473905127	0,27	1	6	1,62	9



SOURCE OF IODINE

**Turkey burgers retail**

	EAN code	Approx. package kg	Pieces per package	Packages per carton	Approx. carton weight (kg)	Shelf life (days)
<b>11852</b>	8006473905103	0,204	2	6	1,224	9



## FRESH, UNCOOKED SPECIALITIES



## SKEWERS

retail

family

maxi



# FRESH UNCOOKED SPECIALITIES

The Amadori uncooked specialties range is an exploration of Italy's most delicious culinary traditions. There's something for everyone, any time of day, either lunch or dinner, guaranteeing you make an impression for the wholesome, tasty food served.

**MADE WITH 100% ITALIAN CHICKEN AND TURKEY**



### Royal skewers retail

	UM	EAN code	Approx. package kg	Pieces per package	Packages per carton	Approx. carton weight (kg)	Shelf life (days)	
	10823	kg	2266460000000	0,600	4	8	4,800	10
	10863 SP	kg	2266460000000	0,600	4	6	3,600	10

### Slim skewers retail

	UM	EAN code	Approx. package kg	Pieces per package	Packages per carton	Approx. carton weight (kg)	Shelf life (days)	
	10989	nr	8006473904854	0,24	6	6	1,44	10



### Royal skewers family

	UM	EAN code	Approx. package kg	Pieces per package	Packages per carton	Approx. carton weight (kg)	Shelf life (days)	
	10853	kg	2522180000000	1,05	7	6	6,3	10

### Royal skewers maxi

	UM	EAN code	Approx. package kg	Pieces per package	Packages per carton	Approx. carton weight (kg)	Shelf life (days)	
	10824	kg	-	1,350	9	4	5,400	10

SP: small package





# FRESH, UNCOOKED SPECIALITIES

## SKEWERS / MINI-SKEWERS

retail

maxi



Chicken skewers with bay leaves **maxi**

UM	EAN code	Approx. package kg	Pieces per package	Packages per carton	Approx. carton weight (kg)	Shelf life (days)	
10755	kg	-	2,100	15	2	4,200	11



Chicken skewers with peppers **retail**

UM	EAN code	Approx. package kg	Pieces per package	Packages per carton	Approx. carton weight (kg)	Shelf life (days)	
10831	kg	2522250000000	0,540	4	6	3,240	10



Turkey skewers with peppers **retail**

UM	EAN code	Approx. package kg	Pieces per package	Packages per carton	Approx. carton weight (kg)	Shelf life (days)	
10822	kg	2265530000000	0,540	4	6	3,240	10

Turkey skewers with peppers **maxi**

UM	EAN code	Approx. package kg	Pieces per package	Packages per carton	Approx. carton weight (kg)	Shelf life (days)	
10820	kg	-	1,350	10	4	5,400	11



Chicken skewers with peppers **maxi**

UM	EAN code	Approx. package kg	Pieces per package	Packages per carton	Approx. carton weight (kg)	Shelf life (days)	
10756	kg	-	2,250	15	2	4,500	11



Turkey mini skewers **retail**

UM	EAN code	Approx. package kg	Pieces per package	Packages per carton	Approx. carton weight (kg)	Shelf life (days)	
10744	kg	2315666000000	0,420	20	6	2,520	9



Turkey mini skewers **maxi**

UM	EAN code	Approx. package kg	Pieces per package	Packages per carton	Approx. carton weight (kg)	Shelf life (days)	
10745	kg	-	0,840	40	4	3,360	9



# FRESH, UNCOOKED SPECIALITIES

## MEATBALLS retail



**Meatballs** retail

UM	EAN code	Approx. package kg	Pieces per package	Packages per carton	Approx. carton weight (kg)	Shelf life (days)
<b>10737</b>	nr 8006473900634	0,240	12	8	1,920	9



**Speck and cheese meatballs** retail

UM	EAN code	Approx. package kg	Pieces per package	Packages per carton	Approx. carton weight (kg)	Shelf life (days)
<b>10950</b>	nr 8006473901587	0,240	12	8	1,920	9



**Truffle meatballs** retail

UM	EAN code	Approx. package kg	Pieces per package	Packages per carton	Approx. carton weight (kg)	Shelf life (days)
<b>10963</b>	nr 8006473902409	0,24	12	8	1,92	9



**NEW**



**Tasty turkey, chicken and pork meatballs** retail

UM	EAN code	Approx. package kg	Pieces per package	Packages per carton	Approx. carton weight (kg)	Shelf life (days)
<b>10990</b>	nr 8006473904830	0,24	12	8	1,92	9



**NEW**



**Caserecce meatballs** retail

UM	EAN code	Approx. package kg	Pieces per package	Packages per carton	Approx. carton weight (kg)	Shelf life (days)
<b>10996</b>	nr 8006473109969	0,27	6	8	2,16	9





# FRESH, UNCOOKED SPECIALITIES

## SAUSAGES

retail

family

maxi



Chicken and turkey sausages **retail**



SOURCE OF IODINE

UM	EAN code	Approx. package kg	Pieces per package	Packages per carton	Approx. carton weight (kg)	Shelf life (days)
10769	nr 8006473018902	0,430	6	12	5,160	9
10789 SP	nr 8006473018902	0,430	6	6	2,580	9

Chicken and turkey sausages **family**



SOURCE OF IODINE

UM	EAN code	Approx. package kg	Pieces per package	Packages per carton	Approx. carton weight (kg)	Shelf life (days)
10770	nr 8006473029014	0,650	9	6	3,900	9

Chicken and turkey sausages **maxi**



SOURCE OF IODINE

UM	EAN code	Approx. package kg	Pieces per package	Packages per carton	Approx. carton weight (kg)	Shelf life (days)
10839	kg -	2,200	40	2	4,400	10

SP: small package



# FRESH, UNCOOKED SPECIALITIES

## HAMBURGER

retail

family

maxi



Classic hamburger **retail**



SOURCE OF IODINE

UM	EAN code	Approx. package kg	Pieces per package	Packages per carton	Approx. carton weight (kg)	Shelf life (days)
10772	nr 8006473019107	0,204	2	14	2,856	9
10944 SP	nr 8006473019107	0,204	2	8	1,632	9



Classic hamburger **family**



SOURCE OF IODINE

UM	EAN code	Approx. package kg	Pieces per package	Packages per carton	Approx. carton weight (kg)	Shelf life (days)
10753	nr 8006473029496	0,408	4	6	2,448	9



Classic hamburger **maxi**



SOURCE OF IODINE

UM	EAN code	Approx. package kg	Pieces per package	Packages per carton	Approx. carton weight (kg)	Shelf life (days)
10859	kg -	1,250	12	5	6,250	9



Herb hamburger **retail**



SOURCE OF IODINE

UM	EAN code	Approx. package kg	Pieces per package	Packages per carton	Approx. carton weight (kg)	Shelf life (days)
10768	nr 8006473029052	0,204	2	14	2,856	9
10945 PI	nr 8006473029052	0,204	2	8	1,632	9



Herb hamburger **family**



SOURCE OF IODINE

UM	EAN code	Approx. package kg	Pieces per package	Packages per carton	Approx. carton weight (kg)	Shelf life (days)
10754	nr 8006463029489	0,408	4	6	2,448	9

SP: small package





# FRESH, UNCOOKED SPECIALITIES

## HAMBURGER / GROUND

retail

family



**Delicate chicken burger** retail

SOURCE OF IODINE

	UM	EAN code	Approx. package kg	Pieces per package	Packages per carton	Approx. carton weight (kg)	Shelf life (days)
10786	nr	8006473901563	0,204	2	8	1,632	9

**Delicate chicken burger** family

10953	nr	8006473901785	0,408	4	6	2,448	9
-------	----	---------------	-------	---	---	-------	---



**Tasty turkey, chicken and pork burger** retail

SOURCE OF IODINE

	UM	EAN code	Approx. package kg	Pieces per package	Packages per carton	Approx. carton weight (kg)	Shelf life (days)
10949	nr	8006473901570	0,204	2	8	1,632	9



**Grangourmet Hamburger** retail

SOURCE OF IODINE

	UM	EAN code	Approx. package kg	Pieces per package	Packages per carton	Approx. carton weight (kg)	Shelf life (days)
10976	nr	8006473902942	0,16	1	12	1,92	9



**Ground minced turkey meat** retail

SOURCE OF IODINE

	UM	EAN code	Approx. package kg	Pieces per package	Packages per carton	Approx. carton weight (kg)	Shelf life (days)
10926	kg	8006473903284	0,270	1	6	1,620	9

# FRESH, UNCOOKED SPECIALITIES

## ROLLS

retail

family

maxi



**Chicken Roll retail**

UM	EAN code	Approx. package kg	Pieces per package	Packages per carton	Approx. carton weight (kg)	Shelf life (days)
10791 SP	kg 2265600000000	0,620	1	4	2,480	9

**Turkey Roll retail**

UM	EAN code	Approx. package kg	Pieces per package	Packages per carton	Approx. carton weight (kg)	Shelf life (days)
10790 SP	kg 2265990000000	0,620	1	4	2,480	9

**Double chicken / turkey roll family**

UM	EAN code	Approx. package kg	Pieces per package	Packages per carton	Approx. carton weight (kg)	Shelf life (days)
10805	kg 2265210000000	1,200	2	3	3,600	9



**Chicken Roll maxi**

UM	EAN code	Approx. package kg	Pieces per package	Packages per carton	Approx. carton weight (kg)	Shelf life (days)
10836	kg -	1,860	3	4	7,440	9

**Turkey Roll maxi**

UM	EAN code	Approx. package kg	Pieces per package	Packages per carton	Approx. carton weight (kg)	Shelf life (days)
10835	kg -	1,860	3	4	7,440	8
10893 PRCD	kg 2265190000000	1,860	3	4	7,440	8

SP: small package; PRCD: priced





# FRESH, UNCOOKED SPECIALITIES

## SPECIALITIES

retail

maxi



Chicken mini-roulades **maxi**

	UM	EAN code	Approx. package kg	Pieces per package	Packages per carton	Approx. carton weight (kg)	Shelf life (days)
<b>10828</b>	kg	-	1,625	13	4	6,500	10
<b>10896 PRCD</b>	kg	2266330000000	1,625	13	4	6,500	10



Chicken morcels with cheese **maxi**

	UM	EAN code	Approx. package kg	Pieces per package	Packages per carton	Approx. carton weight (kg)	Shelf life (days)
<b>10782</b>	kg	-	1,950	15	2	3,900	8



Chicken bundles **retail**

	UM	EAN code	Approx. package kg	Pieces per package	Packages per carton	Approx. carton weight (kg)	Shelf life (days)
<b>10832</b>	kg	2521190000000	0,520	4	6	3,120	10

Chicken bundles **maxi**

	UM	EAN code	Approx. package kg	Pieces per package	Packages per carton	Approx. carton weight (kg)	Shelf life (days)
<b>10897 PRCD</b>	kg	2265250000000	1,170	9	4	4,680	10
<b>10833</b>	kg	-	1,170	9	4	4,680	10



Gran Chef stuffed chicken **retail**

	UM	EAN code	Approx. package kg	Pieces per package	Packages per carton	Approx. carton weight (kg)	Shelf life (days)
<b>10848</b>	kg	2266010000000	1,050	1	4	4,200	9



RED HAWAII SALT

Sliced chicken breast **retail**

	UM	EAN code	Approx. package kg	Packages per carton	Approx. carton weight (kg)	Shelf life (days)
<b>16257</b>	nr	8006473902522	0,40	6	2,40	11

PRCD: priced

## FRESH UNCOOKED PORK



## SKEWERS / SAUSAGES

maxi



Pork skewers **maxi**

	UM	EAN code	Approx. package kg	Pieces per package	Packages per carton	Approx. carton weight (kg)	Shelf life (days)	
	10936	kg	-	1,4	9	4	5,6	10



Classic pork sausages **maxi**

	UM	EAN code	Approx. package kg	Pieces per package	Packages per carton	Approx. carton weight (kg)	Shelf life (days)	
	10932	kg	-	2,3	40	2	4,6	10



SOURCE OF IODINE

# FRESH UNCOOKED PORK

The Pork Fresh, Uncooked Specialities range is an exploration of Italy's most delicious culinary traditions. There's something for everyone, any time of day, either lunch or dinner, guaranteeing you make an impression for the wholesome, tasty food served.

**MADE WITH 100% ITALIAN CHICKEN, TURKEY AND PORK**







# FRESH UNCOOKED PORK

# SAUSAGES

maxi

bulk



Link sausages **maxi**

UM	EAN code	Approx. package kg	Pieces per package	Packages per carton	Approx. carton weight (kg)	Shelf life (days)	
10919	kg	-	2	18	2	4	10



Link classic sausages **maxi**

UM	EAN code	Approx. package kg	Pieces per package	Packages per carton	Approx. carton weight (kg)	Shelf life (days)	
10934	kg	-	2,55	30	2	5,1	10

Link sausages **bulk**

UM	EAN code	Approx. package kg	Pieces per package	Packages per carton	Approx. carton weight (kg)	Shelf life (days)	
10920	kg	-	5,5	55	1	5,5	10

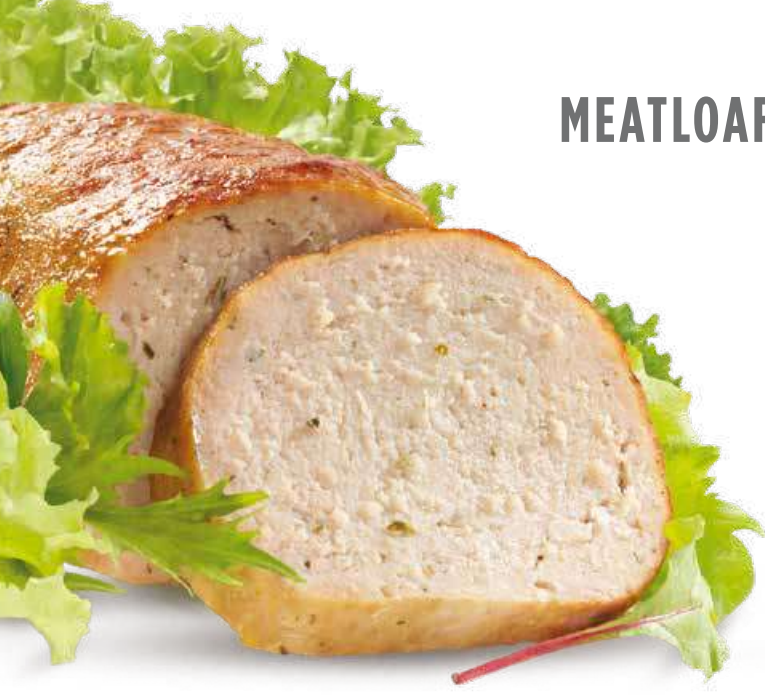


Large sausage **maxi**

UM	EAN code	Approx. package kg	Pieces per package	Packages per carton	Approx. carton weight (kg)	Shelf life (days)	
10943	kg	-	1,0	-	9	9	12

Whole sausage **maxi**

UM	EAN code	Approx. package kg	Pieces per package	Packages per carton	Approx. carton weight (kg)	Shelf life (days)	
10918	kg	-	2,8	1	2	5,6	10



# MEATLOAF ROLLS

## ROLLS

retail

family



Classic Buona Domenica meatloaf roll **retail**

	UM	EAN code	Approx. package kg	Pieces per package	Packages per carton	Approx. carton weight (kg)	Shelf life (days)
<b>11819</b>	nr	8006473010609	0,500	1	4	2,000	9



Classic Buona Domenica meatloaf roll **family**

	UM	EAN code	Approx. package kg	Pieces per package	Packages per carton	Approx. carton weight (kg)	Shelf life (days)
<b>11833 SP</b>	nr	8006473900139	0,700	1	4	2,800	9

# MEATLOAF ROLLS

Every day's a party with Amadori. Our meatloaf rolls add a touch of indulgence to everyday life, with no extra effort in the kitchen. Guaranteeing a tasty lunch or dinner whenever the mood takes you, our recipes have been reformulated to make them even fresher and packed full of goodness. Just pop the meatloaf in the oven to make every day a Sunday Lunch day.

**MADE WITH 100% ITALIAN CHICKEN AND TURKEY**



Buona Domenica scamorza cheese & porcini mushrooms **family**

	UM	EAN code	Approx. package kg	Pieces per package	Packages per carton	Approx. carton weight (kg)	Shelf life (days)
<b>11842</b>	nr	8006473900924	0,700	1	4	2,800	9

SP: small package





# MEATLOAF ROLLS



**Buona Domenica speck & cheese family**

UM	EAN code	Approx. package kg	Pieces per package	Packages per carton	Approx. carton weight (kg)	Shelf life (days)
<b>11831 SP</b>	nr 8006473029533	0,700	1	4	2,800	9



**Buona Domenica ricotta & spinach family**

UM	EAN code	Approx. package kg	Pieces per package	Packages per carton	Approx. carton weight (kg)	Shelf life (days)
<b>11832</b>	nr 8006473029540	0,700	1	4	2,800	9



**Buona Domenica vegetables & cheese family**

UM	EAN code	Approx. package kg	Pieces per package	Packages per carton	Approx. carton weight (kg)	Shelf life (days)
<b>11838</b>	nr 8006473900887	0,700	1	4	2,800	9



**Buona Domenica with truffle family**

UM	EAN code	Approx. package kg	Pieces per package	Packages per carton	Approx. carton weight (kg)	Shelf life (days)
<b>11845</b>	nr 8006473901877	0,700	1	4	2,800	9

SP: small package

# TUTTI D'UN PEZZO

CHICKEN **retail**



**NEW**



**Chicken Nuggets retail**

UM	EAN code	Approx. package kg	Pieces per package	Packages per carton	Approx. carton weight (kg)	Shelf life (days)
41349	nr 8006473902805	0,3	6	8	2,4	12

**Chicken fillet retail**

UM	EAN code	Approx. package kg	Pieces per package	Packages per carton	Approx. carton weight (kg)	Shelf life (days)
40984	nr 8006473904786	0,25	3	8	2	12

## TUTTI D'UN PEZZO

### ALL IN ONE PIECE

**Ground-raised chicken with no antibiotics  
GMO-free, fully-vegetable feed**

From the tasty breaded cutlets, fried in a crispy coating with no palm oil, to the steamed or grilled sliced breast, *All in one piece* is a range of innovative cooked products that are ready in minutes and come in artisan shapes, being made from selected whole cuts of 100% Italian, 10+ Quality chicken meat, ground-raised with no antibiotics and fed GMO-free, fully-vegetable feed.

**QUALITÀ 10<sup>+</sup>**

**POLLO ALLEVATO A TERRA  
SENZA USO DI ANTIBIOTICI**

ALIMENTAZIONE NO OGM VEGETALE



**Steamed sliced chicken breast retail**

UM	EAN code	Approx. package kg	Pieces per package	Packages per carton	Approx. carton weight (kg)	Shelf life (days)
41701	nr 8006473904793	0,23	3	8	1,84	10



# TUTTI D'UN PEZZO

CHICKEN

maxi



**Chicken Nuggets maxi**

UM	EAN code	Approx. package kg	Pieces per package	Packages per carton	Approx. carton weight (kg)	Shelf life (days)	
41396	nr	-	1,0	20	4	4,00	12



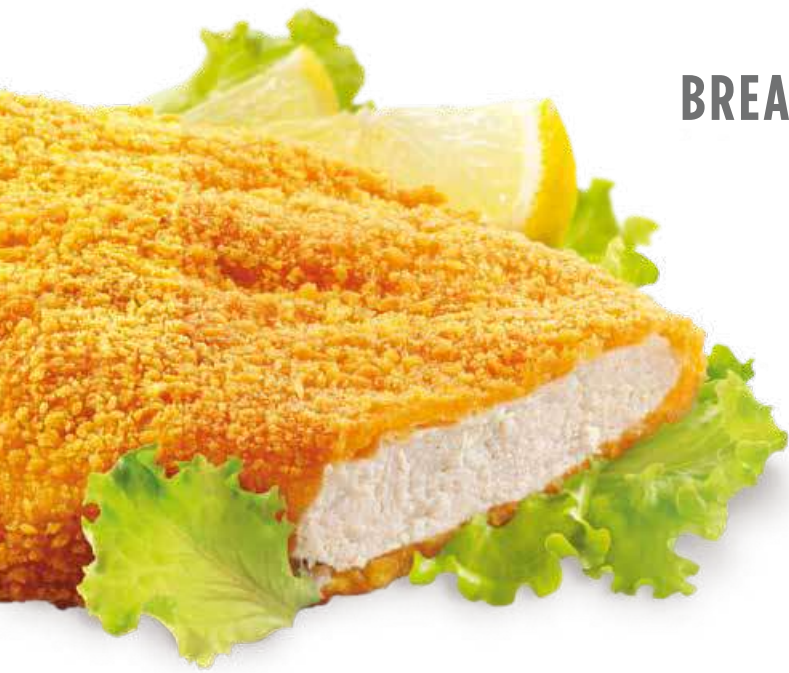
**Chicken fillet maxi**

UM	EAN code	Approx. package kg	Pieces per package	Packages per carton	Approx. carton weight (kg)	Shelf life (days)	
40985	nr	-	0,66	6	4	2,64	12



**Steamed sliced chicken breast maxi**

UM	EAN code	Approx. package kg	Pieces per package	Packages per carton	Approx. carton weight (kg)	Shelf life (days)	
41317	nr	-	0,64	8	3	1,92	15



# BREADED

# CLASSIC CUTLET

retail

family

maxi



SOURCE OF IODINE

SOURCE OF IODINE

Classic chicken cutlet **retail**

	UM	EAN code	Approx. package kg	Pieces per package	Packages per carton	Approx. carton weight (kg)	Shelf life (days)
	41174	nr 8006473018803	0,22	2	10	2,2	12
	41007 SP	nr 8006473018803	0,22	2	6	1,32	12

Classic chicken cutlet **family**

	UM	EAN code	Approx. package kg	Pieces per package	Packages per carton	Approx. carton weight (kg)	Shelf life (days)
	41189	nr 8006473022503	0,55	5	6	3,3	12

# BREADED

Temptingly tasty and super succulent, Amadori breaded goods made from **100% Italian chicken and turkey**, not separated mechanically, are ideal for every occasion.

Amadori **quick-serve breaded products**, heated in the oven or hob and available in a variety of recipes and formats, from classic to low-fat, and from rich, **full-flavoured specialities to original combinations**, provide everyday variety and a way of enjoying every moment to the full.

**MADE WITH 100% ITALIAN CHICKEN AND TURKEY**



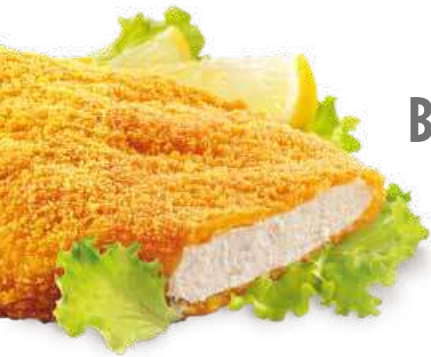
SOURCE OF IODINE

Classic chicken cutlet **maxi**

	UM	EAN code	Approx. package kg	Pieces per package	Packages per carton	Approx. carton weight (kg)	Shelf life (days)
	41171 PRCD	kg 2264890000000	1,10	10	4	4,4	12
	41111	kg -	1,10	10	4	4,4	12

SP: small package; PRCD: priced





# BREADED

# THIN-CUT CUTLET / CRUNCHY CUTLET

single

retail



Thin-cut cutlet std **single**

UM	EAN code	Approx. package kg	Pieces per package	Packages per carton	Approx. carton weight (kg)	Shelf life (days)
41038	nr 8006473903451	0,15	1	8	1,2	12



Thin-cut cutlet std **retail**

UM	EAN code	Approx. package kg	Pieces per package	Packages per carton	Approx. carton weight (kg)	Shelf life (days)
40994	nr 8006473903567	0,30	2	8	2,4	12



Thin-cut cutlet in pizzaiola sauce **retail**

UM	EAN code	Approx. package kg	Pieces per package	Packages per carton	Approx. carton weight (kg)	Shelf life (days)
40978	nr 8006473904991	0,30	2	8	2,4	12



Crunchy cutlet **retail**

UM	EAN code	Approx. package kg	Pieces per package	Packages per carton	Approx. carton weight (kg)	Shelf life (days)
41374	nr 8006473901891	0,22	2	8	1,76	12

SOURCE OF IODINE

# BREADED



# ESCALOPE WITH SPINACH

retail

family

maxi



SOURCE OF IODINE



SOURCE OF IODINE

## Escalope with spinach retail

	UM	EAN code	Approx. package kg	Pieces per package	Packages per carton	Approx. carton weight (kg)	Shelf life (days)
	nr	8006473016304	0,22	2	10	2,2	12
	nr	8006473016304	0,22	2	6	1,32	12

## Escalope with spinach family

	UM	EAN code	Approx. package kg	Pieces per package	Packages per carton	Approx. carton weight (kg)	Shelf life (days)
	nr	8006473022602	0,55	5	6	3,3	12



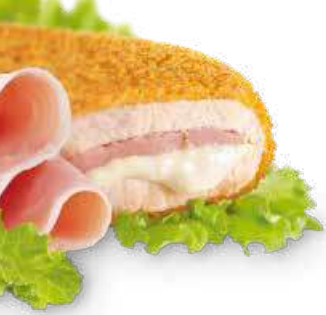
SOURCE OF IODINE

## Escalope with spinach maxi

	UM	EAN code	Approx. package kg	Pieces per package	Packages per carton	Approx. carton weight (kg)	Shelf life (days)
	kg	2604930000000	1,1	10	4	4,4	12
	kg	-	1,1	10	4	4,4	12

SP: small package; PRCD: priced





# BREADED

# CORDON BLEU / JAMBLEU

retail

family

maxi



SOURCE OF IODINE

**Cheese and ham cordon** retail

	UM	EAN code	Approx. package kg	Pieces per package	Packages per carton	Approx. carton weight (kg)	Shelf life (days)
<b>41170</b>	nr	8006473016403	0,25	2	10	2,5	12
<b>41006 SP</b>	nr	8006473016403	0,25	2	6	1,5	12



SOURCE OF IODINE

**Prague ham and mozzarella cheese cordon** retail

	UM	EAN code	Approx. package kg	Pieces per package	Packages per carton	Approx. carton weight (kg)	Shelf life (days)
<b>41422</b>	nr	8006473903550	0,25	2	6	1,5	12



**Jambleu** retail

	UM	EAN code	Approx. package kg	Pieces per package	Packages per carton	Approx. carton weight (kg)	Shelf life (days)
<b>41014</b>	nr	8006473901556	0,26	4	6	1,56	12



SOURCE OF IODINE

**Cheese and ham cordon** family

	UM	EAN code	Approx. package kg	Pieces per package	Packages per carton	Approx. carton weight (kg)	Shelf life (days)
<b>41192</b>	nr	8006473022800	0,5	4	6	3	12



SOURCE OF IODINE

**Cheese and ham cordon** maxi

	UM	EAN code	Approx. package kg	Pieces per package	Packages per carton	Approx. carton weight (kg)	Shelf life (days)
<b>41335 PRCD</b>	kg	2604790000000	1	8	4	4	12
<b>41114</b>	kg	-	1	8	4	4	12

SP: small package; PRCD: priced



# BREADED

## GRANBURGER / CRISPY FILLED MEATBALLS / CHICKITO MEX

retail

maxi



SOURCE OF IODINE

**GranBurger retail**

UM	EAN code	Approx. package kg	Pieces per package	Packages per carton	Approx. carton weight (kg)	Shelf life (days)
41420	nr 8006473901907	0,28	2	8	2,24	12



**Crispy, filled meatballs retail**

UM	EAN code	Approx. package kg	Pieces per package	Packages per carton	Approx. carton weight (kg)	Shelf life (days)
40970	nr -	0,24	12	8	1,92	12

**Crispy, filled meatballs maxi**

UM	EAN code	Approx. package kg	Pieces per package	Packages per carton	Approx. carton weight (kg)	Shelf life (days)
40971	nr -	1	49	4	4	15



**Chickito mexican chicken std retail**

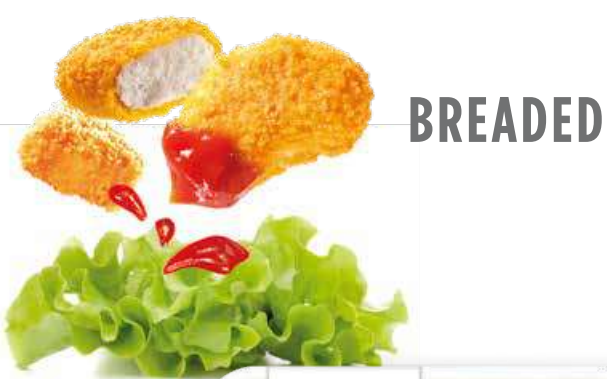
UM	EAN code	Approx. package kg	Pieces per package	Packages per carton	Approx. carton weight (kg)	Shelf life (days)
41397	nr 8006473902799	0,3	15	8	2,4	12



**Chickito mexican chicken td maxi**

UM	EAN code	Approx. package kg	Pieces per package	Packages per carton	Approx. carton weight (kg)	Shelf life (days)
41398	nr -	1	50	4	4	12





# BREADED

# NUGGETS

retail

family

maxi



SOURCE OF IODINE



SOURCE OF IODINE



SOURCE OF IODINE

## Chicken nuggets retail

UM	EAN code	Approx. package kg	Pieces per package	Packages per carton	Approx. carton weight (kg)	Shelf life (days)
41173	nr 8006473018704	0,3	16	10	3	12
41092 SP	nr 8006473018704	0,3	16	6	1,8	12
41102 SP	kg 2522700000000	0,323	17	6	1,938	12

## Chicken nuggets family

UM	EAN code	Approx. package kg	Pieces per package	Packages per carton	Approx. carton weight (kg)	Shelf life (days)
41191	nr 8006473022701	0,5	27	6	3	12

## Chicken nuggets maxi

UM	EAN code	Approx. package kg	Pieces per package	Packages per carton	Approx. carton weight (kg)	Shelf life (days)
41116	kg -	1,04	54	4	4,16	12
41172 PRCD	kg 2657800000000	1	52	4	4	12



## Chicken nuggets with spinach retail

UM	EAN code	Approx. package kg	Pieces per package	Packages per carton	Approx. carton weight (kg)	Shelf life (days)
41048	nr 8006473901648	0,3	16	6	1,8	12



## Chicken nuggets with Speck and Emmenthal retail

UM	EAN code	Approx. package kg	Pieces per package	Packages per carton	Approx. carton weight (kg)	Shelf life (days)
41049	nr 8006473901662	0,3	16	6	1,8	12



## Chicken nuggets with Speck and Emmenthal maxi

UM	EAN code	Approx. package kg	Pieces per package	Packages per carton	Approx. carton weight (kg)	Shelf life (days)
41045 PRCD	kg 2684222000000	1	52	4	4	12

SP: small package; PRCD: priced



READY TO-EAT

KEBAB AND SLICED CHICKEN

retail

maxi

READY TO-EAT

A unique, versatile range packed with lots of quick-make recipes, from ethnic kebabs to delicate tenders, full-flavoured chicken legs and tasty wings, just heat for two minutes and eat.

MADE WITH 100% ITALIAN CHICKEN AND TURKEY



Sliced chicken breast retail

UM	EAN code	Approx. package kg	Pieces per package	Packages per carton	Approx. carton weight (kg)	Shelf life (days)
41473	nr 8006473901761	0,280	-	8	2,24	12

Sliced chicken breast maxi

41476	kg	-	0,750	-	6	4,5	12
-------	----	---	-------	---	---	-----	----



Chicken Kebab retail

UM	EAN code	Approx. package kg	Pieces per package	Packages per carton	Approx. carton weight (kg)	Shelf life (days)
41489	nr 8006473903048	0,280	-	8	2,24	12



Turkey Kebab retail

UM	EAN code	Approx. package kg	Pieces per package	Packages per carton	Approx. carton weight (kg)	Shelf life (days)
41472	nr 8006473901754	0,280	-	8	2,24	12

Turkey Kebab maxi

41475	kg	-	0,750	-	6	4,5	12
-------	----	---	-------	---	---	-----	----





# READY TO-EAT

# CHICKEN WINGS

retail

family

maxi



Spicy chicken wings **family**

	UM	EAN code	Approx. package kg	Pieces per package	Packages per carton	Approx. carton weight (kg)	Shelf life (days)
<b>41252</b>	nr	8006473901341	0,5	15	6	3	12



Smoked paprika chicken wings **retail**

	UM	EAN code	Approx. package kg	Pieces per package	Packages per carton	Approx. carton weight (kg)	Shelf life (days)
<b>41307</b>	nr	8006473904199	0,5	13	6	3	12



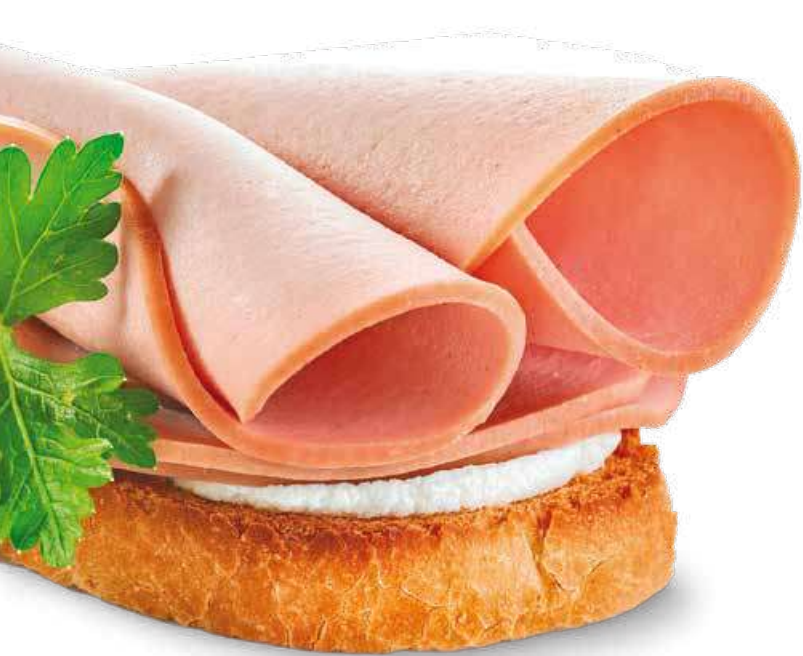
Spicy chicken wings **maxi**

	UM	EAN code	Approx. package kg	Pieces per package	Packages per carton	Approx. carton weight (kg)	Shelf life (days)
<b>41258</b>	kg	-	1	27	4	4	11



Smoked paprika chicken wings **maxi**

	UM	EAN code	Approx. package kg	Pieces per package	Packages per carton	Approx. carton weight (kg)	Shelf life (days)
<b>41308</b>	nr	8006473904199	1	25	4	4	15



# ROASTS

# ROASTS

retail



Roast turkey thigh retail

UM	EAN code	Approx. package kg	Pieces per package	Packages per carton	Approx. carton weight (kg)	Shelf life (days)
41239	nr 8006473029212	0,300	1	10	3	90



Roast turkey breast retail

UM	EAN code	Approx. package kg	Pieces per package	Packages per carton	Approx. carton weight (kg)	Shelf life (days)
41241	nr 8006473029236	0,300	1	10	3	90

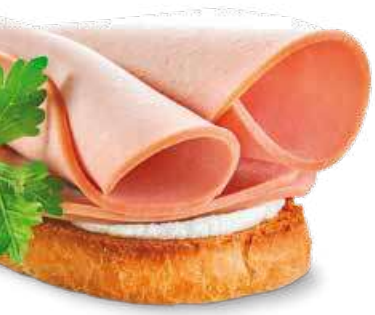
# ROASTS

Ideal for starters, fillings, sandwiches and a tasty meat course, our roasts are the perfect dish for discerning consumers who like to eat healthily without having to give up tasty, mouth-watering food, quality and service. Stand-out products in the range are the roast slices and joints of 10+ Quality chicken and turkey, ground-raised with no antibiotics.

**MADE WITH 100% ITALIAN CHICKEN AND TURKEY**







# ROASTS

# QUALITÀ 10+ ROASTS

retail

cuts



GLUTEN FREE

Sliced roast turkey breast **retail**

UM	EAN code	Approx. package kg	Pieces per package	Packages per carton	Approx. carton weight (kg)	Shelf life (days)
41236	nr 8006473028604	0,120	5	12	1,44	30



GLUTEN FREE

Sliced roast chicken breast **retail**

UM	EAN code	Approx. package kg	Pieces per package	Packages per carton	Approx. carton weight (kg)	Shelf life (days)
41237	nr 8006473028703	0,120	5	12	1,44	30



GLUTEN FREE

Roast turkey breast **cuts**

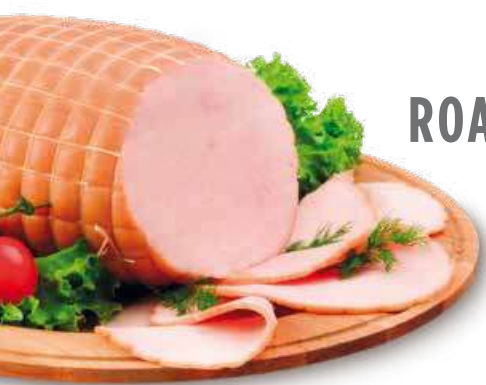
UM	EAN code	Approx. package kg	Pieces per package	Packages per carton	Approx. carton weight (kg)	Shelf life (days)
41704	nr -	3,000	1	2	6	90



GLUTEN FREE

Roast chicken breast **cuts**

UM	EAN code	Approx. package kg	Pieces per package	Packages per carton	Approx. carton weight (kg)	Shelf life (days)
41447	kg -	3,000	1	2	6	90



# ROASTS

# TURKEY CUTS

cuts



GLUTEN FREE



GLUTEN FREE

**Pagnottella roast whole turkey breast cuts**

UM	EAN code	Approx. package kg	Pieces per package	Packages per carton	Approx. carton weight (kg)	Shelf life (days)
41223	kg	-	3,550	1	2	7,1 90

**85% Roast turkey breast cuts**

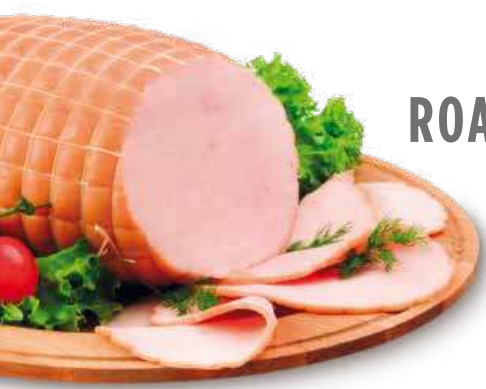
UM	EAN code	Approx. package kg	Pieces per package	Packages per carton	Approx. carton weight (kg)	Shelf life (days)
41702	nr	-	3,000	1	2	6 90

**GranRosty turkey breast cuts**

UM	EAN code	Approx. package kg	Pieces per package	Packages per carton	Approx. carton weight (kg)	Shelf life (days)
41265	kg	-	3,000	1	2	6 90



# ROASTS



# CHICKEN CUTS

cuts



GLUTEN FREE



GLUTEN FREE

GranRosty chicken breast cuts

UM	EAN code	Approx. package kg	Pieces per package	Packages per carton	Approx. carton weight (kg)	Shelf life (days)	
41270	kg	-	3,000	1	2	6	90

Roast chicken with herbs cuts

UM	EAN code	Approx. package kg	Pieces per package	Packages per carton	Approx. carton weight (kg)	Shelf life (days)	
41455	kg	-	3,000	1	2	6	90



## VEGETABLE SPECIALITIES

HAMBURGER

retail



Hamburger with vegetables, quinoa and chicken **retail**

	UM	EAN code	Approx. package kg	Pieces per package	Packages per carton	Approx. carton weight (kg)	Shelf life (days)
<b>40301</b>	nr	8006473903543	0,190	2	6	1,14	12



Mini Hamburgers with vegetables and chicken fillets **retail**

	UM	EAN code	Approx. package kg	Pieces per package	Packages per carton	Approx. carton weight (kg)	Shelf life (days)
<b>40300</b>	nr	8006473903536	0,200	8	6	1,2	12

# VEGETABLE SPECIALITIES

An array of products, ready in minutes, that seamlessly combine the nutritional properties of poultry meat and vegetables, designed for consumers looking for quality products that are a source of protein and fibre as part of a healthy, balanced diet.

**MADE WITH 100% ITALIAN CHICKEN**







**NEW**

# PENSATI PER VOI

# READY MEALS

retail

maxi



CHICKEN REARED WITH NO ANTIBIOTICS



CHICKEN REARED WITH NO ANTIBIOTICS

Cacciatora chicken with turmeric basmati rice **retail**

	UM	EAN code	Approx. package kg	Pieces per package	Packages per carton	Approx. carton weight (kg)	Shelf life (days)
<b>40516</b>	nr	8006473904496	0,25	1	6	1,5	33

Cacciatora chicken **maxi**

	UM	EAN code	Approx. package kg	Pieces per package	Packages per carton	Approx. carton weight (kg)	Shelf life (days)
<b>40509</b>	nr	8006473904373	1,00	1	4	4	23



CHICKEN REARED WITH NO ANTIBIOTICS



CHICKEN REARED WITH NO ANTIBIOTICS

Curried chicken with coconut, apple and Venus rice **retail**

	UM	EAN code	Approx. package kg	Pieces per package	Packages per carton	Approx. carton weight (kg)	Shelf life (days)
<b>40518</b>	nr	8006473904519	0,25	1	6	1,5	33

Curried chicken with coconut and apple **maxi**

	UM	EAN code	Approx. package kg	Pieces per package	Packages per carton	Approx. carton weight (kg)	Shelf life (days)
<b>40512</b>	nr	8006473904403	1,00	1	4	4	23

# PENSATI per VOI

## MADE for YOU

Delicious recipes, both traditional and gourmet, which combine the lightness of poultry meat with selected ingredients in different ways, ready to serve or to heat in a few minutes. Each dish is a source of protein and ideal way to combine the fast pace of modern life with the pleasure of eating well, available in both practical single-portion aluminium packages, suitable for microwave and traditional oven, and also as maxi formats.

**MADE WITH 100% ITALIAN CHICKEN**







# PENSATI PER VOI

# READY MEALS

retail

maxi



Lasagna with a chicken-based tomato sauce **retail**

	UM	EAN code	Approx. package kg	Pieces per package	Packages per carton	Approx. carton weight (kg)	Shelf life (days)
<b>40522</b>	nr	8006473904946	0,38	1	6	2,28	

Lasagna with a chicken-based tomato sauce **maxi**

	UM	EAN code	Approx. package kg	Pieces per package	Packages per carton	Approx. carton weight (kg)	Shelf life (days)
<b>40515</b>	nr	8006473904489	1,00	1	4	4	23



Chicken and mushroom nuggets **maxi**

	UM	EAN code	Approx. package kg	Pieces per package	Packages per carton	Approx. carton weight (kg)	Shelf life (days)
<b>40521</b>	nr	8006473904953	1,00	1	4	4	23

Cannelloni filled with chicken, ricotta cheese and spinach **maxi**

	UM	EAN code	Approx. package kg	Pieces per package	Packages per carton	Approx. carton weight (kg)	Shelf life (days)
<b>40520</b>	nr	8006473904533	1,1	1	4	4,4	23

Chicken with tuna sauce **maxi**

	UM	EAN code	Approx. package kg	Pieces per package	Packages per carton	Approx. carton weight (kg)	Shelf life (days)
<b>40511</b>	nr	8006473904397	1,00	1	4	4	23



# PENSATI PER VOI

SALADS **retail**



Five-grain salad with quinoa, soya, edamame beans and chicken **retail**

UM	EAN code	Approx. package kg	Pieces per package	Packages per carton	Approx. carton weight (kg)	Shelf life (days)
40500	nr 8006473903703	0,2	1	6	1,2	34



Tabbouleh with cous cous, adzuki beans, olives & chicken **retail**

UM	EAN code	Approx. package kg	Pieces per package	Packages per carton	Approx. carton weight (kg)	Shelf life (days)
40501	nr 8006473903710	0,2	1	6	1,2	34



Barley salad with quinoa, cranberries and sliced chicken **retail**

UM	EAN code	Approx. package kg	Pieces per package	Packages per carton	Approx. carton weight (kg)	Shelf life (days)
40502	nr 8006473903727	0,2	1	6	1,2	34





# PENSATI PER VOI



**Five-grain salad with quinoa, soya, edamame beans and chicken **maxi****

	UM	EAN code	Approx. package kg	Pieces per package	Packages per carton	Approx. carton weight (kg)	Shelf life (days)
<b>40503</b>	nr	8006473903871	1	1	4	4	34

**Tabbouleh with cous cous, adzuki beans, olives & chicken **maxi****

	UM	EAN code	Approx. package kg	Pieces per package	Packages per carton	Approx. carton weight (kg)	Shelf life (days)
<b>40504</b>	nr	8006473903888	1	1	4	4	34

**Barley salad with quinoa, cranberries and sliced chicken **maxi****

	UM	EAN code	Approx. package kg	Pieces per package	Packages per carton	Approx. carton weight (kg)	Shelf life (days)
<b>40505</b>	nr	8006473903895	1	1	4	4	34



# PENSATI PER VOI



**Chicken and vegetables soup** retail

UM	EAN code	Approx. package kg	Pieces per package	Packages per carton	Approx. carton weight (kg)	Shelf life (days)
40400	nr 8006473903666	0,3	1	6	1,8	27



**Chicken, barley and vegetables soup** retail

UM	EAN code	Approx. package kg	Pieces per package	Packages per carton	Approx. carton weight (kg)	Shelf life (days)
40401	nr 8006473903673	0,3	1	6	1,8	27



**Chicken, vegetables and lentil soup** retail

UM	EAN code	Approx. package kg	Pieces per package	Packages per carton	Approx. carton weight (kg)	Shelf life (days)
40402	nr 8006473903680	0,3	1	6	1,8	27



**Pasta with chicken and beans** retail

UM	EAN code	Approx. package kg	Pieces per package	Packages per carton	Approx. carton weight (kg)	Shelf life (days)
40412	nr 8006473904960	0,3	1	6	1,8	23





# CHICKEN/TURKEY FRANKFURTERS

single

family



LACTOSE FREE SOURCE OF IODINE

## 100% chicken/turkey frankfurter **single**

UM	EAN code	Approx. package kg	Pieces per package	Packages per carton	Approx. carton weight (kg)	Shelf life (days)
<b>42075</b>	nr 8006473903079	0,1	4	25	2,5	120



LACTOSE FREE SOURCE OF IODINE

## 100% chicken/turkey frankfurter multipack **family**

UM	EAN code	Approx. package kg	Pieces per package	Packages per carton	Approx. carton weight (kg)	Shelf life (days)
<b>42077</b>	nr 8006473903239	0,5	20	5	2,5	120

# 100%

It's all in the substance: 100% frankfurters are not only made with 100% Italian 10+ Quality chicken and turkey breast and leg, from animals ground-raised with no antibiotics, ground and not mechanically separated meat, they also have no added polyphosphates, no monosodium glutamate and are lactose free. Offering consumers the choice of quality and flavour, also available with pure pork meat.

**WITH 100% ITALIAN 10+ QUALITY CHICKEN AND TURKEY GROUND-RAISED WITH NO ANTIBIOTICS**





# 100% FRANKFURTERS CHICKEN/TURKEY/PORK FRANKFURTERS

single

retail

maxi



CHICKEN AND TURKEY REARED WITH NO ANTIBIOTICS



LACTOSE FREE SOURCE OF IODINE

100% chicken/turkey frankfurter retail

UM	EAN code	Approx. package kg	Pieces per package	Packages per carton	Approx. carton weight (kg)	Shelf life (days)
42079	nr 8006473903093	0,25	3	12	3	120



CHICKEN AND TURKEY REARED WITH NO ANTIBIOTICS



LACTOSE FREE SOURCE OF IODINE

100% chicken/turkey frankfurter 250g x3 maxi

UM	EAN code	Approx. package kg	Pieces per package	Packages per carton	Approx. carton weight (kg)	Shelf life (days)
42082	nr 8006473903253	0,75	9	4	3	120



LACTOSE FREE

100% pork frankfurter single

UM	EAN code	Approx. package kg	Pieces per package	Packages per carton	Approx. carton weight (kg)	Shelf life (days)
42096	nr 8006473903185	0,1	4	25	2,5	120



LACTOSE FREE

100% pork frankfurter retail

UM	EAN code	Approx. package kg	Pieces per package	Packages per carton	Approx. carton weight (kg)	Shelf life (days)
42097	nr 8006473903192	0,25	3	12	3	120





**EVVIVA!**

**CHICKEN / TURKEY FRANKFURTERS**

single

family



LACTOSE FREE



LACTOSE FREE

**Evviva chicken/turkey frankfurter single**

	UM	EAN code	Approx. package kg	Pieces per package	Packages per carton	Approx. carton weight (kg)	Shelf life (days)
42244	nr	8006473000501	0,1	4	40	4,0	120
42103	nr	8006473000501	0,1	4	25	2,5	120

**Evviva chicken/turkey frankfurter multipack family**

	UM	EAN code	Approx. package kg	Pieces per package	Packages per carton	Approx. carton weight (kg)	Shelf life (days)
42240	nr	-	0,5	20	5	2,5	120

**EVVIVA!**  
Tutta la bontà del wurstel italiano

**All the natural goodness of an Italian frankfurter**  
Made with chicken and turkey hatched and reared in Italy, Evviva frankfurters contain no monosodium glutamate or added polyphosphates, are both lactose and gluten-free so suitable for coeliac conditions; they are also a source of iodine, contributing to the healthy growth of children, and available in tasty versions with Emmental cheese, and with pork and turkey.

**MADE WITH 100% ITALIAN CHICKEN AND TURKEY**



**Evviva chicken/turkey frankfurter with cheese single**

	UM	EAN code	Approx. package kg	Pieces per package	Packages per carton	Approx. carton weight (kg)	Shelf life (days)
42254	nr	8006473009603	0,15	3	16	2,4	120



**EVVIVA!**

**CHICKEN / TURKEY FRANKFURTERS**

retail

family

maxi



**Evviva chicken/turkey frankfurter retail**

UM	EAN code	Approx. package kg	Pieces per package	Packages per carton	Approx. carton weight (kg)	Shelf life (days)
42236	nr 8006473000600	0,25	3	16	4,0	120
42104	nr 8006473000600	0,25	3	12	3,0	120



**Evviva chicken/turkey frankfurter family**

UM	EAN code	Approx. package kg	Pieces per package	Packages per carton	Approx. carton weight (kg)	Shelf life (days)
42241	nr -	0,75	9	4	3	120



**Evviva chicken/turkey frankfurter family**

UM	EAN code	Approx. package kg	Pieces per package	Packages per carton	Approx. carton weight (kg)	Shelf life (days)
42220	nr 8006473005407	0,5	6	6	3	120



**Evviva chicken/turkey frankfurter maxi**

UM	EAN code	Approx. package kg	Pieces per package	Packages per carton	Approx. carton weight (kg)	Shelf life (days)
42108	nr 8006473901471	0,80	12	6	4,8	120
42257	nr 8006473010203	0,85	12	4	3,4	120



**Evviva chicken/turkey frankfurter maxi**

UM	EAN code	Approx. package kg	Pieces per package	Packages per carton	Approx. carton weight (kg)	Shelf life (days)
42106	nr 8006473901037	1	12	4	4	120





**EVVIVA!**

**PORK / TURKEY FRANKFURTERS**

- single
- retail
- family
- maxi



LACTOSE FREE SOURCE OF IODINE

**Evviva pork/turkey frankfurter single**

	UM	EAN code	Approx. package kg	Pieces per package	Packages per carton	Approx. carton weight (kg)	Shelf life (days)
42245	nr	8006473006404	0,1	4	40	4,0	120
42222	nr	8006473006404	0,1	4	25	2,5	120



LACTOSE FREE SOURCE OF IODINE

**Evviva pork/turkey frankfurter retail**

	UM	EAN code	Approx. package kg	Pieces per package	Packages per carton	Approx. carton weight (kg)	Shelf life (days)
42238	nr	8006473006503	0,25	3	16	4,0	120
42223	nr	8006473006503	0,25	3	12	3,0	120



LACTOSE FREE SOURCE OF IODINE

**Evviva pork/turkey frankfurter family**

	UM	EAN code	Approx. package kg	Pieces per package	Packages per carton	Approx. carton weight (kg)	Shelf life (days)
42243	nr	-	0,75	9	4	3	120



LACTOSE FREE SOURCE OF IODINE

**Evviva pork/turkey frankfurter family**

	UM	EAN code	Approx. package kg	Pieces per package	Packages per carton	Approx. carton weight (kg)	Shelf life (days)
42224	nr	8006473006602	0,5	6	6	3	120



LACTOSE FREE SOURCE OF IODINE

**Evviva pork/turkey frankfurter 1kg maxi**

	UM	EAN code	Approx. package kg	Pieces per package	Packages per carton	Approx. carton weight (kg)	Shelf life (days)
42107	nr	8006473901044	1	12	4	4	120



# TRADITIONAL

# CHICKEN

**bulk**



# TRADITIONAL

Amadori presents chicken and turkey meat which is tasty and nutritious thanks to the noble proteins and vitamins they contain, in an array of traditional cuts.

**MADE WITH 100% ITALIAN CHICKEN AND TURKEY**



### Whole chicken **bulk**

	Description	Approx. package kg	Packages per carton	Approx. carton weight (kg)	Shelf life (days)
<b>10116</b>	Whole chickens x4 with head and legs	10,8	1	10,8	12
<b>10159</b>	Whole corn-fed chickens x4 with head and legs	10,8	1	10,8	12
<b>10117</b>	Whole chicken x4 with head and legs, giblets removed, fr a	10	1	10	12
<b>10154</b>	Whole, corn-fed chicken x4 with head and legs, giblets removed, fr a	10	1	10	12
<b>10105</b>	Whole, corn-fed chicken x6 with head and legs, fr	1,375	4	5,5	12

### Whole chicken to dissect **bulk**

	Description	Approx. package kg	Packages per carton	Approx. carton weight (kg)	Shelf life (days)
<b>10245</b>	Whole untucked chicken to dissect x6, fr a	12,6	1	12,6	12
<b>10249</b>	Whole untucked chicken to dissect, fr a	12	1	12	12
<b>10006</b>	Whole untucked, corn-fed chicken to dissect x6, fr a	12,6	1	12,6	12
<b>10208</b>	Whole untucked chicken to dissect x7, fr a	11,9	1	11,9	12
<b>10230</b>	Whole untucked chicken, to dissect x8, fr a	12	1	12	12
<b>10266</b>	Whole untucked, corn-fed chicken to dissect, fr a	12	1	12	12
<b>10265</b>	Whole untucked, corn-fed chicken to dissect x6, fr a	12,6	1	12,6	12
<b>10258</b>	Whole untucked, corn-fed chicken to dissect x7, fr a	11,9	1	11,9	12





# TRADITIONAL



## Whole chicken **bulk**

	Description	Approx. package kg	Packages per carton	Approx. carton weight (kg)	Shelf life (days)
10203	Whole chicken 800 fr a	9,78	1	9,78	12
10253	Whole chicken 850 fr a	0,845	12	10,14	12
10220	Whole chicken 900 fr a	10,86	1	10,86	12
10270	Whole chicken 970 fr a	0,96	10	9,6	12
10201	Whole chicken 1000 fr a	10	1	10	12
10251	Whole chicken 1000 fr a	1,04	10	10,4	12
10223	Whole chicken 1100 fr a	1,11	10	11,1	12
10273	Whole chicken 1100 fr a	1,145	10	11,45	12
10212	Whole chicken 1200 fr a	12,1	1	12,1	12
10262	Whole chicken 1200 fr a	1,25	10	12,5	12
10204	Whole chicken fr a	0,63	16	10,08	12
10254	Whole chicken fr a	10,08	1	10,08	12
10213	Whole chicken 1300 fr a	1,33	8	10,64	12
10227	Whole chicken 1300 sc fr a	1,33	9	11,97	12
10263	Whole chicken 1300 fr a	1,33	8	10,64	12
10225	Whole chicken 1100 sc fr a	1,11	10	11,1	12
10226	Whole chicken 1200 sc fr a	1,21	10	12,1	12
10232	Whole chicken rost 1000 seasoned fr a	1	10	10	12
10234	Whole chicken rost 1100 seasoned fr a	1,11	10	11,1	12
10235	Whole chicken rost 1200 seasoned fr a	1,21	10	12,1	12
10231	Whole chicken rost 1100num seasoned fr a	1,11	10	11,1	12
10283	Whole chicken num seasoned fr a	1	10	10	12



## Chicken breast **maxi**

	Description	EAN code	Approx. package kg	Packages per carton	Approx. carton weight (kg)	Shelf life (days)
10501	Chicken breast, super, fr a	-	3	4	12	12
10551	Corn-fed chicken breast, super, fr a	-	3	4	12	12
10565	Boneless, corn-fed chicken breast 2kg, vacuum packed	-	2,5	4	10	20
10499	Chicken breast, maxi, 1.2kg, fr a	2521610000000	1,5	8	12	9
10500	Corn-fed chicken breast, maxi, 1.2kg, fr a	2521610000000	1,5	8	12	9
10506	Chicken breast, super, 2.5kg, fr a	-	3	4	12	12
10519	Chicken breast, super, 2.5kg small box, fr a	-	3	2	6	12
10552	Corn-fed chicken breast, super, 2.5kg, fr a	-	2,6	4	10,4	12
10561	Boneless chicken breast, vac pack, horeca	2521610000000	2,1	2	4,2	20
10553	Corn-fed chicken breast, super, 2.5kg small box, fr a	-	3	2	6	12

## Chicken breast **bulk**

10508	Chicken breast, bulk super fr a	-	13	1	13	12
10560	Chicken breast, skin-on with bone fr a	-	12	1	12	12

# CHICKEN

maxi

bulk



## Chicken wings **maxi**

	Description	Approx. package kg	Packages per carton	Approx. carton weight (kg)	Shelf life (days)
10403	Chicken wings fr a	1,26	7	8,82	10
10409	Chicken wings, maxi fr a	2,5	2	5	10
10459	Corn-fed chicken wings, maxi fr a	2,5	2	5	10
10412	Corn-fed whole chicken wings, large-size pieces, maxi	3	2	6	10
10413	Pol fuso-ala stick sf maxi	2	2	4	10



## Chicken wings **bulk**

	Description	Approx. package kg	Packages per carton	Approx. carton weight (kg)	Shelf life (days)
10402	Unseparated chicken wings, large-size pieces fra	11,78	1	11,78	12
10452	Unseparated, corn-fed chicken wings, large-size pieces fr a	11,4	1	11,4	12
10411	Unseparated chicken wings fr a	12	1	12	12



# TRADITIONAL



**Chicken thigh maxi**

	Description	Approx. package kg	Packages per carton	Approx. carton weight (kg)	Shelf life (days)
10323	Chicken thigh - maxi, fr a	2,25	2	4,5	10
10373	Corn-fed chicken thigh - maxi fr a	2,61	2	5,22	10
10326	Chicken thigh x8, vac pack, cal 140-160g	1,2	3	3,6	20
10348	Chicken thigh x8, vac pack, cal 170-190g	1,44	3	4,32	12
10354	Boneless chicken thigh, vac-pac	2,42	4	9,68	20



**Chicken drumsticks maxi**

	Description	Approx. package kg	Packages per carton	Approx. carton weight (kg)	Shelf life (days)
10322	Chicken drumsticks, maxi fr a	3,24	2	6,48	10
10372	Corn-fed chicken drumsticks, maxi fr a	3,24	2	6,48	10
10331	Chicken drumsticks x8, vac pack, cal 140-160g	1,2	3	3,6	20
10330	Chicken drumsticks x8, vac pack, cal 120-140g	1,04	3	3,12	20
10349	Chicken drumsticks x8, vac pack, cal 120-140g	1,04	3	3,12	20
10329	Pol fusi x8 sv cal 90-120gr	0,84	3	2,52	20

# CHICKEN

retail

maxi

bulk



**Chicken legs maxi**

	Description	Approx. package kg	Packages per carton	Approx. carton weight (kg)	Shelf life (days)
10321	Chicken legs, maxi fr a	2,52	2	5,04	10
10371	Corn-fed chicken legs, maxi fa a	2,52	2	5,04	10
10346	Chicken legs, maxi, large size fr a	3,2	2	6,4	10
10370	Corn-fed chicken legs, maxi, large size fr a	3,2	2	6,4	10
10302	Boneless chicken legs, vac pack fr a	0,84	7	5,88	12
10312	Chicken legs/2, medium-size pieces fr a	2,8	2	5,6	10
10298	Chicken legs x10, vac-pac, cal 215-245g	2,3	2	4,6	20
10380	Chicken legs x10 vac pack, cal 245-275g	2,6	2	5,2	20
10297	Corn-fed chicken legs x10, vac pack, cal 180-200g	1,9	2	3,8	20



**Chicken liver retail**

	Description	Approx. package kg	Packages per carton	Approx. carton weight (kg)	Shelf life (days)	Shelf life (days)
16038	Chic. liver, 350g, pack. fr a	2265540000000	0,35	8	2,8	8
16095	Chicken liver, 350g, small pack. fr a	2265540000000	0,33	5	1,65	8

**Chicken liver maxi**

43101	Chic. liver/hearts, 1kg, vac pack	2266030000000	1	14	14	12
10604	Chic. liver, 10kg	-	10	1	10	9
10614	Chic. liver/hearts, 0.5kg, vac pack, small pack.	-	0,5	4	2	12



**Chicken giblets retail**

	Description	Approx. package kg	Packages per carton	Approx. carton weight (kg)	Shelf life (days)	Shelf life (days)
16039	Chick. giblets, 350g, packaged	2265570000000	0,35	8	2,8	8
16096	Chick. giblets, 350g, small pack.	2265570000000	0,35	5	1,75	8

**Chicken giblets maxi**

10623	Chick. giblets, 1kg, vac pack	-	1	14	14	12
10615	Chick. giblets, 0.5kg, vac pack, small pack.	-	0,5	4	2	12

**Other chicken cuts bulk**

10702	Chick. backs to dissect	-	12	1	12	12
-------	-------------------------	---	----	---	----	----

**Chicken quarters bulk**

10319	Untucked chicken quarters, large-size pieces fr a	12	1	12	12
10369	Corn-fed untucked chicken quarters, large-size pieces, fr a	12	1	12	12
10375	Corn-fed chicken quarters, medium-size fr a pieces	12	1	12	12
10343	Untucked chicken quarters, medium-size pieces fr a	12	1	12	12
10378	Untucked, corn-fed chicken quarters, large-size pieces fr a	12	1	12	12
10317	Boneless chicken quarters fr b	11,2	1	11,2	12



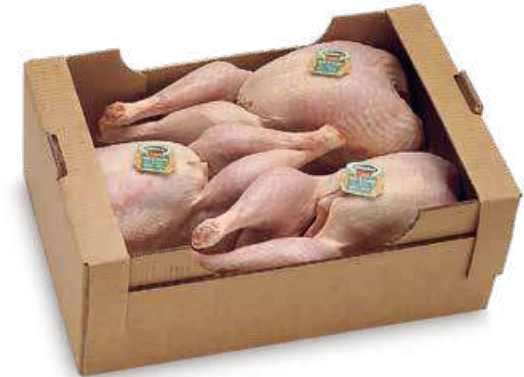


# TRADITIONAL

# TURKEY

maxi

bulk



## Turkey breast maxi

	Description	Approx. package kg	Packages per carton	Approx. carton weight (kg)	Shelf life (days)
11506	Turkey breast, female fr a	4,4	4	17,6	12
11523	Turkey breast, female, vac pack fr a	4	4	16	20
11820	Turkey medallions, maxi fr a	2,4	4	9,6	10
11417	Sliced turkey breast, maxi fr a	2,5	4	10	10
11508	Turkey breast, male, vac pack fr a	5	4	20	20
11510	Turkey breast, male, without medallion, vac pack fr a	5	4	20	20
11505	Turkey breast, male fr a	5	4	20	12
11524	Boneless turkey breast, male, skin-on, vac pack fr a	5,5	4	22	20
11526	Turkey breast, male, euro, 1 lobe, vac pack	2,2	6	13,2	20
11534	Turkey breast, male, without medallion, vac pack, small fr a	5	2	10	20
11503	Turkey breast, male, large pieces, vac pack fr a	5	4	20	20
11530	Boneless turkey breast, male, skin-on, vac pack fr a	5,5	4	22	30

## Turkey breast bulk

11520	Boneless turkey breast, male, skin-on fr a	20	1	20	12
11522	Turkey breast, male, vac pack, 2 per box fr a	5	2	10	20
11521	Turkey breast, male, vac pack, 1 per pack	5	1	5	20
11541	Turkey breast, male, without medallion, industry	18	1	18	12

## Full male turkey bulk

	Description	Approx. package kg	Packages per carton	Approx. carton weight (kg)	Shelf life (days)
11201	Whole turkey, male fr a	26	1	26	12
11213	Whole turkey, male, 1 per pack fr a	13	1	13	12
11314	Turkey crown, male fr a	7,25	3	21,75	12

## Full female turkey bulk

	Description	Approx. package kg	Packages per carton	Approx. carton weight (kg)	Shelf life (days)
11202	Whole turkey, female fr a	6	3	18	12



## Turkey leg maxi

	Description	Approx. package kg	Packages per carton	Approx. carton weight (kg)	Shelf life (days)
11327	Boneless turkey leg, female, skin-on, vac pack fr a	3,8	4	15,2	20

## Turkey leg bulk

11302	Turkey thigh, male fr a	8	1	8	12
-------	-------------------------	---	---	---	----



# TRADITIONAL

# TURKEY

maxi

bulk



**Female turkey drumsticks maxi**

	Description	Approx. package kg	Packages per carton	Approx. carton weight (kg)	Shelf life (days)
<b>11321</b>	Turkey drumsticks, female, maxi, fr a	3,04	2	6,08	9



**Male turkey drumsticks maxi**

	Description	Approx. package kg	Packages per carton	Approx. carton weight (kg)	Shelf life (days)
<b>11320</b>	Turkey drumsticks, male, maxi, fr a	3,6	2	7,2	10



**Turkey thigh maxi**

	Description	Approx. package kg	Packages per carton	Approx. carton weight (kg)	Shelf life (days)
<b>11323</b>	Turkey thigh, female, maxi, fr a	3,3	2	6,6	9
<b>11322</b>	Turkey thigh, male, maxi, fr a	3,3	2	6,6	10
<b>11535</b>	Boneless, skinless turkey thigh, male, vac pack, fr a	4,5	3	13,5	20



**Turkey wings maxi**

	Description	Approx. package kg	Packages per carton	Approx. carton weight (kg)	Shelf life (days)
<b>11410</b>	Turkey wings, male, maxi fr a	3,6	2	7,2	10
<b>11412</b>	Turkey wings, female, maxi fr a	3,6	2	7,2	10

**Other turkey cuts maxi**

	Description	Approx. package kg	Packages per carton	Approx. carton weight (kg)	Shelf life (days)
<b>10624</b>	Turkey giblets, vac pack	1	14	14	12
<b>10619</b>	Turkey giblets, vac pack, small pack.	1	4	4	12
<b>11307</b>	Turkey thigh pieces, vac pack	2	4	8	20
<b>11605</b>	Turkey heart	2	6	12	9

**Other turkey cuts bulk**

<b>11701</b>	Turkey neck	13	1	13	9
--------------	-------------	----	---	----	---





# TRADITIONAL

## TURKEY HEN

maxi

bulk



Whole turkey hen **maxi**

	Description	Approx. package kg	Packages per carton	Approx. carton weight (kg)	Shelf life (days)
11206	Fresh small whole turkey hen	2,75	4	10,6	9



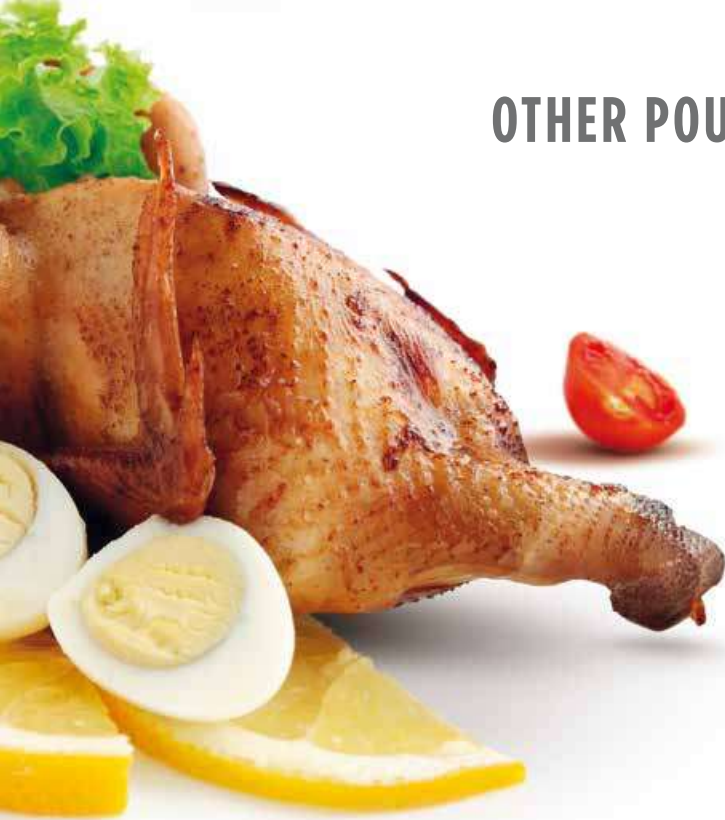
Whole turkey hen **bulk**

	Description	Approx. package kg	Packages per carton	Approx. carton weight (kg)	Shelf life (days)
11203	Fresh small whole turkey hen	2,75	4	10,6	12



Traditional turkey hen **bulk**

	Description	Approx. package kg	Packages per carton	Approx. carton weight (kg)	Shelf life (days)
11103	Fresh small whole traditional turkey hen	3,00	4	12	12



**Whole hen, packaged**

UM	EAN code	Approx. package kg	Pieces per package	Packages per carton	Approx. carton weight (kg)	Shelf life (days)
12405	kg 2522810000000	1	1	6	6	9

**Small whole hen, bulk**

UM	EAN code	Approx. package kg	Pieces per package	Packages per carton	Approx. carton weight (kg)	Shelf life (days)
12202	kg -	1,15	1	4	4,6	12

**Large whole hen, bulk**

12201	kg -	3	1	2	6	14
-------	------	---	---	---	---	----

# OTHER POULTRY PRODUCTS

Amadori provides a wide range of poultry meats that are part of Italy's culinary heritage, such as rabbit, farmyard and Leghorn chickens, hens and cockerels, as well as guinea hen, quail, capon, duck, pigeon and goose for those who enjoy more original flavours.







## OTHER POULTRY PRODUCTS

## COCKEREL / FARMYARD / QUAIL



**Cockerel, packaged**

	UM	EAN code	Approx. package kg	Pieces per package	Packages per carton	Approx. carton weight (kg)	Shelf life (days)
<b>10205</b>	kg	2266050000000	0,52	1	7	3,64	10



**Farmyard chicken, bulk**

	UM	EAN code	Approx. package kg	Pieces per package	Packages per carton	Approx. carton weight (kg)	Shelf life (days)
<b>10106</b>	kg	-	2	1	3	6	12



**Quail, packaged**

	UM	EAN code	Approx. package kg	Pieces per package	Packages per carton	Approx. carton weight (kg)	Shelf life (days)
<b>13118 SP</b>	kg	2266020000000	0,6	4	4	2,4	10



**Quail, bulk**

	UM	EAN code	Approx. package kg	Pieces per package	Packages per carton	Approx. carton weight (kg)	Shelf life (days)
<b>13117 SP</b>	kg	-	1,6	10	2	3,2	10

SP: small package

# OTHER POULTRY PRODUCTS

# RABBIT / GUINEA HEN



### Whole rabbit, packaged

	UM	EAN code	Approx. package kg	Pieces per package	Packages per carton	Approx. carton weight (kg)	Shelf life (days)
14206	kg	2522820000000	1,3	1	4	5,2	9

### Rabbit extra SF

	UM	EAN code	Pack. weight (kg)	Pieces per package	Packages per carton	Approx. carton weight (kg)	Shelf life (99)
14214	kg	-	4,275	3	1	4,275	14

### Rabbit 1,2/1,4 kg SF

14215	kg	-	1,3	1	6	7,8	14
-------	----	---	-----	---	---	-----	----

### Rabbit 1,4/1,6 kg SF

14202	kg	-	1,5	1	5	7,5	9
-------	----	---	-----	---	---	-----	---

### Rabbit over 1,6 kg SF

14216	kg	-	1,6	0	5	8	14
-------	----	---	-----	---	---	---	----

### Whole guinea hen, bulk

	UM	EAN code	Approx. package kg	Pieces per package	Packages per carton	Approx. carton weight (kg)	Shelf life (days)
15201	kg	-	1,1	1	4	4,4	12

### Traditional guinea hen, bulk

15101	kg	-	1,45	1	4	5,8	12
-------	----	---	------	---	---	-----	----



## OTHER POULTRY PRODUCTS



### Traditional duck, bulk

	UM	EAN code	Approx. package kg	Pieces per package	Packages per carton	Approx. carton weight (kg)	Shelf life (days)
<b>14302</b>	kg	-	1,8	0	3	5,4	12

### Duck breast, vacuum-packed

<b>14304</b>	kg	-	0,8	1	8	6,4	18
--------------	----	---	-----	---	---	-----	----



### Traditional capon, packaged

	UM	EAN code	Approx. package kg	Pieces per package	Packages per carton	Approx. carton weight (kg)	Shelf life (days)
<b>10630</b>	kg	2522850000000	2,25	1	4	9	10

### Traditional capon, bulk

<b>10103</b>	kg	-	2,25	1	5	11,25	12
--------------	----	---	------	---	---	-------	----



### Whole capon, packaged

	UM	EAN code	Approx. package kg	Pieces per package	Packages per carton	Approx. carton weight (kg)	Shelf life (days)
<b>10631</b>	kg	2522550000000	2	1	4	8	10

### Whole capon, bulk

<b>10126</b>	kg	-	2	1	5	10	12
--------------	----	---	---	---	---	----	----

### Leghorn chicken, bulk

	UM	EAN code	Approx. package kg	Pieces per package	Packages per carton	Approx. carton weight (kg)	Shelf life (days)
<b>10105</b>	kg	-	1,375	1	4	5,5	12

### Plucked pidgeon, bulk

	UM	EAN code	Approx. package kg	Pieces per package	Packages per carton	Approx. carton weight (kg)	Shelf life (days)
<b>14401</b>	kg	-	0,45	0	4	1,8	12

### Traditional goose, bulk

	UM	EAN code	Approx. package kg	Pieces per package	Packages per carton	Approx. carton weight (kg)	Shelf life (days)
<b>14300</b>	kg	-	3,75	1	2	7,5	12

## DUCK / CAPON / OTHER



Whole chicken, packaged, Halal retail

	UM	EAN code	Approx. package kg	Pieces per package	Packages per carton	Approx. carton weight (kg)	Shelf life (days)
<b>58915</b>	kg	2230611000000	1,05	1	4	4,2	9

Sliced chicken breast, Halal family

	UM	EAN code	Approx. package kg	Pieces per package	Packages per carton	Approx. carton weight (kg)	Shelf life (days)
<b>58918</b>	kg	2311920000000	0,63	7	9	5,67	9

Whole chicken, packaged, Halal (frozen) retail

	UM	EAN code	Approx. package kg	Pieces per package	Packages per carton	Approx. carton weight (kg)	Shelf life (days)
<b>43232</b>	kg	2230611000000	1,25	1	6	7,5	720



Unseparated chicken wings, x 2, packaged, Halal family

	UM	EAN code	Approx. package kg	Pieces per package	Packages per carton	Approx. carton weight (kg)	Shelf life (days)
<b>58919</b>	kg	2215936000000	0,80	2	8	6,4	9

Chicken leg quarter x 2, Halal maxi

	UM	EAN code	Approx. package kg	Pieces per package	Packages per carton	Approx. carton weight (kg)	Shelf life (days)
<b>58916</b>	kg	2230705000000	2,96	8	4	11,84	9

# Baraka

Halal

A wide and full range of chicken and turkey products, guaranteed by the reputation and credibility of the Amadori name.

Chicken and turkey meat prepared according to Islamic Halal guidelines.







**Chicken livers family**

	UM	EAN code	Approx. package kg	Pieces per package	Packages per carton	Approx. carton weight (kg)	Shelf life (days)
<b>58934</b>	kg	2961934000000	0,5	20	6	3	8



**Chicken giblets family**

	UM	EAN code	Approx. package kg	Pieces per package	Packages per carton	Approx. carton weight (kg)	Shelf life (days)
<b>58935</b>	kg	2422273000000	0,5	15	6	3	8



# BARAKA HALAL

# TRADITIONAL BULK / CHICKEN

bulk



**Whole chicken, Halal bulk**

	UM	EAN code	Approx. package kg	Pieces per package	Packages per carton	Approx. carton weight (kg)	Shelf life (days)
<b>58901</b>	kg	1591590000000	10,5	10	1	10,5	12
<b>58930</b>	kg	-	10,2	12	1	10,2	12
<b>58903</b>	kg	-	1,55	1	8	12,4	12
<b>58902</b>	kg	-	1,25	1	10	12,5	12

**Whole chicken, dissected, Halal bulk**

	UM	EAN code	Approx. package kg	Pieces per package	Packages per carton	Approx. carton weight (kg)	Shelf life (days)
<b>58909</b>	kg	1591630000000	13,2	6	1	13,2	12

**Chicken quarter, Halal bulk**

	UM	EAN code	Approx. package kg	Pieces per package	Packages per carton	Approx. carton weight (kg)	Shelf life (days)
<b>58906</b>	kg	1591640000000	6	8	1	6	12

**Boneless chicken x 2, Halal bulk**

	UM	EAN code	Pack. weight (kg)	Pieces per package	Packages per carton	Approx. carton weight (kg)	Shelf life (days)
<b>10300</b>	kg	-	2,2	13	4	8,8	12





**BARAKA HALAL**

TRADITIONAL PACKAGED PRODUCTS / TURKEY  
TRADITIONAL BULK / TURKEY

family

bulk



**Sliced turkey breast family**

	UM	EAN code	Approx. package kg	Pieces per package	Packages per carton	Approx. carton weight (kg)	Shelf life (days)
<b>58920</b>	kg	2522040000000	0,7	7	9	6,3	9



**Male whole turkey, Halal bulk**

	UM	EAN code	Approx. package kg	Pieces per package	Packages per carton	Approx. carton weight (kg)	Shelf life (days)
<b>58910</b>	kg	-	15	1	1	15	12

**Male turkey leg, Halal bulk**

	UM	EAN code	Approx. package kg	Pieces per package	Packages per carton	Approx. carton weight (kg)	Shelf life (days)
<b>58913</b>	kg	-	8	4	1	8	12

**Turkey leg x 1, Halal, vac pack bulk**

	UM	EAN code	Approx. package kg	Pieces per package	Packages per carton	Approx. carton weight (kg)	Shelf life (days)
<b>58933</b>	kg	-	2,1	1	5	10,5	20

**Turkey breast, Halal, vac pack bulk**

	UM	EAN code	Approx. package kg	Pieces per package	Packages per carton	Approx. carton weight (kg)	Shelf life (days)
<b>58912</b>	kg	-	5	1	4	20	20

**Male turkey drumsticks, Halal bulk**

	UM	EAN code	Approx. package kg	Pieces per package	Packages per carton	Approx. carton weight (kg)	Shelf life (days)
<b>58932</b>	kg	-	0,8	1	16	12,8	12



Turkey skewers with peppers, Halal **maxi**

UM	EAN code	Approx. package kg	Pieces per package	Packages per carton	Approx. carton weight (kg)	Shelf life (days)	
58921	kg	-	2,5	18	2	5	11



Chicken sausage, Halal **maxi**

UM	EAN code	Approx. package kg	Pieces per package	Packages per carton	Approx. carton weight (kg)	Shelf life (days)	
56857	kg	-	2,2	40	2	4,4	10



Chicken nuggets, Halal **maxi**

UM	EAN code	Approx. package kg	Pieces per package	Packages per carton	Approx. carton weight (kg)	Shelf life (days)	
58936	kg	8006473900153	1	52	4	4	22



Classic chicken cutlet, Halal **maxi**

UM	EAN code	Approx. package kg	Pieces per package	Packages per carton	Approx. carton weight (kg)	Shelf life (days)	
58937	kg	8006473900443	1,1	10	4	4,4	22



Turkey cutlet, Halal **maxi**

UM	EAN code	Approx. package kg	Pieces per package	Packages per carton	Approx. carton weight (kg)	Shelf life (days)	
56856	kg	-	1,1	10	4	4,4	12





# BARAKA HALAL

# COOKED PRODUCTS

single

retail

family

maxi

cuts

## ITALIAN CERTIFIED HALAL PRODUCTS



Turkey frankfurter, Halal **single**

Turkey frankfurter, Halal **retail**

Turkey frankfurter, Halal **maxi**

UM	EAN code	Approx. package kg	Pieces per package	Packages per carton	Approx. carton weight (kg)	Shelf life (days)
42128	nr 8006473901600	0,10	4	25	2,5	150

UM	EAN code	Approx. package kg	Pieces per package	Packages per carton	Approx. carton weight (kg)	Shelf life (days)
42138	nr 8006473901198	0,25	3	12	3	150

UM	EAN code	Approx. package kg	Pieces per package	Packages per carton	Approx. carton weight (kg)	Shelf life (days)
42139	nr 8006473901525	1,0	12	4	4	150



Roast turkey, Halal **cuts**

Pagnottella turkey breast, Halal **cuts**

Parizer (cooked chicken sausage) Baraka Halal **family**

UM	EAN code	Approx. package kg	Pieces per package	Packages per carton	Approx. carton weight (kg)	Shelf life (days)
41298	kg 106243000000	3	1	2	6	120

UM	EAN code	Approx. package kg	Pieces per package	Packages per carton	Approx. carton weight (kg)	Shelf life (days)
69410	kg	3,55	1	2	7,1	120

UM	EAN code	Approx. package kg	Pieces per package	Packages per carton	Approx. carton weight (kg)	Shelf life (days)
42181	kg 8006473903482	0,5	1	12	6	120



# EGGS

# EGGS FROM ORGANIC FARMS

## EGGS

A full range of fresh, carefully inspected Italian eggs from Amadori farms: fresh and extra-fresh, free-range, and in pourable cartons. Amadori also markets organic eggs from qualified suppliers. 100% Italian, fresh and genuine: it's stated on every shell. Our eggs have the contour of Italy printed on their shell in order to ensure the utmost level of transparency and safety. The origin from the integrated production Supply Chain also guarantees their quality, thanks to the certified traceability system UNI EN ISO 22005:2008.

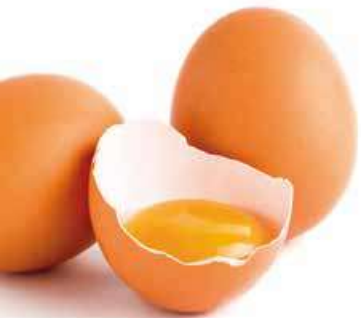
**100% ITALIAN EGGS**



**Fresh eggs x 4 ORGANIC**

	EAN code	Weight category	Eggs per package	Packages per box	Boxes per layer	Layers per pallet	Shelf life (days)
<b>12641</b>	8006473900450	Ⓣ	4	96	6	9	28





# EGGS

## EGGS FROM OUTDOOR FARMS EGGS FROM HENS GROUND-RAISED WITH NO ANTIBIOTICS



Fresh eggs from outdoor farming systems

	EAN code	Weight category	Eggs per package	Packages per box	Boxes per layer	Layers per pallet	Shelf life (days)
<b>12605</b>	8006473904724	⓪	6	96	6	9	28



Fresh eggs from ground-raised hen with no antibiotics x6

	EAN code	Weight category	Eggs per package	Packages per box	Boxes per layer	Layers per pallet	Shelf life (days)
<b>12601</b>	8006473904816	⓪	6	96	6	9	28



# EGGS

# EGGS FROM GROUND-RAISED HENS



**Eggs x2**

**Eggs x4**

**Eggs x6**

	EAN code	Weight category	Eggs per package	Packages per box	Boxes per layer	Layers per pallet	Shelf life (days)
<b>12620</b>	8006473022404	(D)	2	24	10	10	28

	EAN code	Weight category	Eggs per package	Packages per box	Boxes per layer	Layers per pallet	Shelf life (days)
<b>12625</b>	8006473900320	(D)	4	96	6	9	28

	EAN code	Weight category	Eggs per package	Packages per box	Boxes per layer	Layers per pallet	Shelf life (days)
<b>12616</b>	8006473021605	(D)	6	96	6	9	28

**Eggs x6 24 packs**

<b>12607</b>	8006473021605	(D)	6	144	10	4	28
--------------	---------------	-----	---	-----	----	---	----



**Eggs x10**

**Extra-fresh eggs x6**

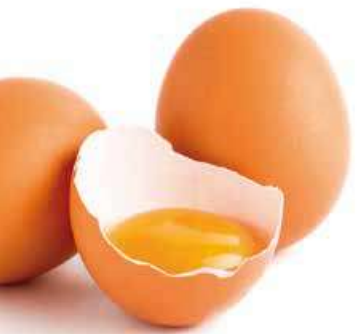
	EAN code	Weight category	Eggs per package	Packages per box	Boxes per layer	Layers per pallet	Shelf life (days)
<b>12628</b>	8006473900474	(M)	10	200	6	5	28

	EAN code	Weight category	Eggs per package	Packages per box	Boxes per layer	Layers per pallet	Shelf life (days)
<b>12629</b>	8006473900467	(D)	6	96	6	9	9

**Eggs x8+2 free**

<b>12626</b>	8006473900337	(D)	10	200	6	5	28
--------------	---------------	-----	----	-----	---	---	----





# EGGS

# EGGS FROM GROUND-RAISED HENS



**NEW**



**NEW**



**Large eggs x6**

**Extra-large eggs x6**

**Eggs M 8 cf x30 ama terra**

	EAN code	Weight category	Eggs per package	Packages per box	Boxes per layer	Layers per pallet	Shelf life (days)
<b>12606</b>	8006473905080	(L)	6	96	6	9	28

	EAN code	Weight category	Eggs per package	Packages per box	Boxes per layer	Layers per pallet	Shelf life (days)
<b>12932</b>	8006473905097	(XL)	6	120	10	4	28

	Codice EAN	Categoria di peso	Uova per conf.	Uova per cassa	Casse per strato	Strati per pallet	Shelf life (gg)
<b>12674</b>	8006473905271	(M)	30	240	4	4	28

**Eggs L 8 cf x30 ama terra**

<b>12675</b>	8006473905288	(L)	30	240	4	4	28
--------------	---------------	-----	----	-----	---	---	----



**NEW**



**NEW**

**Yellow eggs for pasta 330g x6**

**Yellow eggs for pasta x10**

	EAN code	Weight category	Eggs per package	Packages per box	Boxes per layer	Layers per pallet	Shelf life (days)
<b>12693</b>	8006473905066	(D)	6	144	6	7	28

	EAN code	Weight category	Eggs per package	Packages per box	Boxes per layer	Layers per pallet	Shelf life (days)
<b>12694</b>	8006473905073	(D)	10	200	6	5	28



# EGGS

# EGGS FROM CAGE REARING



**Medium eggs 53/63 gr. x6**

	EAN code	Weight category	Eggs per package	Packages per box	Boxes per layer	Layers per pallet	Shelf life (days)
12610	8006473000204	(M)	6	144	6	7	28

**Medium-size eggs x6 in carton**

12648	8006473000204	(M)	6	1296	2	2	28
-------	---------------	-----	---	------	---	---	----



**Large eggs 63/73 gr. x6**

	EAN code	Weight category	Eggs per package	Packages per box	Boxes per layer	Layers per pallet	Shelf life (days)
12609	8006473000303	(L)	6	144	6	7	28

**Large eggs x6 in carton**

12651	8006473000303	(L)	6	1296	2	2	28
-------	---------------	-----	---	------	---	---	----



**Extra-large eggs x6**

	EAN code	Weight category	Eggs per package	Packages per box	Boxes per layer	Layers per pallet	Shelf life (days)
12608	8006473024606	(XL)	6	120	10	4	28



**Extra-fresh large eggs x6**

	EAN code	Weight category	Eggs per package	Packages per box	Boxes per layer	Layers per pallet	Shelf life (days)
12615	8006473021209	(L)	6	96	6	9	9



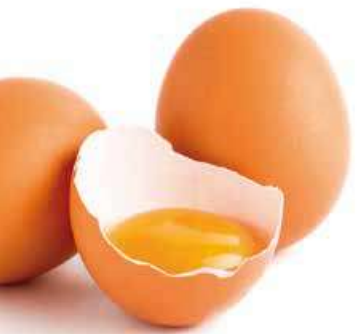
**Medium-size eggs x10**

	EAN code	Weight category	Eggs per package	Packages per box	Boxes per layer	Layers per pallet	Shelf life (days)
12614	8006473021100	(M)	10	160	7	5	28

**Medium-size eggs x10 in carton**

12647	8006473021100	(M)	10	1200	2	2	28
-------	---------------	-----	----	------	---	---	----





# EGGS

# EGGS FROM CAGE REARING



**Eggs M 8 x30 for pasta**

	EAN code	Weight category	Eggs per package	Packages per box	Boxes per layer	Layers per pallet	Shelf life (days)
<b>12656</b>	8006473024903	<b>M</b>	30	240	4	4	28



**Eggs L 8 x30 for pasta**

	EAN code	Weight category	Eggs per package	Packages per box	Boxes per layer	Layers per pallet	Shelf life (days)
<b>12644</b>	8006473900498	<b>L</b>	30	240	4	4	28



# EGGS

## PASTEURISED, EGGS FROM GROUND-RAISED HENS, IN POURABLE CARTONS



Free-range pasteurized eggs

	Description	EAN code	Approx. package kg	Packages per carton	Boxes per layer	Layers per pallet	Shelf life (days)
12630	Blended eggs	8006473023708	12	12	12	5	37
12663	Blended eggs brick 1 kg	8006473023708	4	4	36	5	37
12631	Egg yolks	8006473023302	12	12	12	5	37
12665	Egg yolks brick 1 kg	8006473023302	4	4	36	5	37
12632	Egg whites	8006473023104	12	12	12	5	37
12664	Egg whites brick 1 kg	8006473023104	4	4	36	5	37

Pasteurised eggs

	Description	EAN code	Approx. package kg	Packages per carton	Boxes per layer	Layers per pallet	Shelf life (days)
12639	Blended eggs for pasta	8006473023906	12	12	12	5	30
12671	Blended eggs for pasta ground-raised	8006473023906	4	4	36	5	40
12637	Egg yolks for pasta	8006473023500	12	12	12	5	37
12672	Egg yolks for pasta ground-raised	8006473023500	4	4	36	5	40
12660	Egg whites sweetened 50% for desserts	8006473025702	15	12	12	5	365





# EGGS



Eggs in bottle

	Description	EAN code	Approx. package kg	Packages per carton	Approx. carton weight (kg)	Layers per pallet	Shelf life (days)
<b>12685</b>	Blended eggs, bottle, 1kg, organic	8006473903291	1	6	6	5	30



Eggs in bottle

	Description	EAN code	Approx. package kg	Packages per carton	Approx. carton weight (kg)	Layers per pallet	Shelf life (days)
<b>12680</b>	Super whipping egg whites, bottle, 1kg	8006473902928	1	6	6	5	30

# PASTEURISED EGGS IN BOTTLE



Eggs in bottle

	Description	EAN code	Approx. package kg	Packages per carton	Approx. carton weight (kg)	Layers per pallet	Shelf life (days)
<b>12673</b>	Blended eggs ground-raised, bottle, 1kg	8006473902850	1	6	6	5	30



Eggs in bottle

	Description	EAN code	Approx. package kg	Packages per carton	Approx. carton weight (kg)	Layers per pallet	Shelf life (days)
<b>12676</b>	Egg yolks, ground-raised, bottle, 1kg	8006473902881	1	6	6	5	30



Eggs in bottle

	Description	EAN code	Approx. package kg	Packages per carton	Approx. carton weight (kg)	Layers per pallet	Shelf life (days)
<b>12679</b>	Egg whites, ground-raised, bottle, 1kg	8006473902911	1	6	6	5	30



Eggs in bottle

	Description	EAN code	Approx. package kg	Packages per carton	Approx. carton weight (kg)	Layers per pallet	Shelf life (days)
<b>12670</b>	Blended eggs, bottle, 1kg	8006473904717	1	6	6	5	30



# EGGS

# PASTEURISED EGGS IN BOTTLE



Eggs in bottle

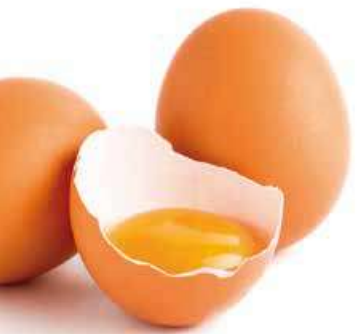
	Description	EAN code	Approx. package kg	Packages per carton	Approx. carton weight (kg)	Layers per pallet	Shelf life (days)
<b>12689</b>	Egg whites, ground-raised, bottle, 250 g	8006473904557	0,25	8	2		30



Eggs in bottle

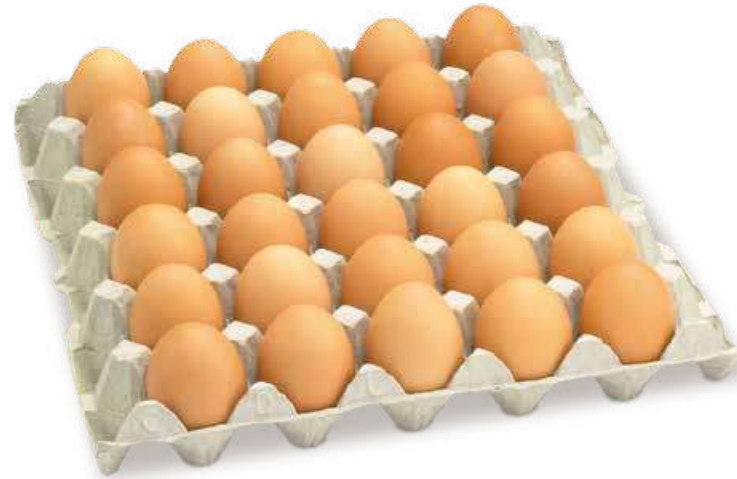
	Description	EAN code	Approx. package kg	Packages per carton	Approx. carton weight (kg)	Layers per pallet	Shelf life (days)
<b>12688</b>	Egg yolks, ground-raised, bottle, 250 g	8006473904540	0,25	8	2		30





# EGGS

# EGGS IN BULK



## Eggs in bulk, ORGANIC

	Description	Weight category	Eggs per package	Eggs per box	Boxes per layer	Layers per pallet	Shelf life (days)
<b>12642</b>	Organic eggs, bulk, 90	Ⓞ	30	90	8	6	28

## Eggs in bulk, ground-raised

	Description	Weight category	Eggs per package	Eggs per box	Boxes per layer	Layers per pallet	Shelf life (days)
<b>12623</b>	Size M extra-fresh, free-range eggs, bulk x90	Ⓜ	30	90	3	8	48
<b>12624</b>	Size L extra-fresh, free-range eggs, bulk x90	Ⓛ	30	90	8	6	28
<b>12921</b>	Size L free-range eggs, bulk x180	Ⓛ	30	180	8	7	28
<b>12922</b>	Size M free-range eggs, bulk x180	Ⓜ	30	180	8	7	28

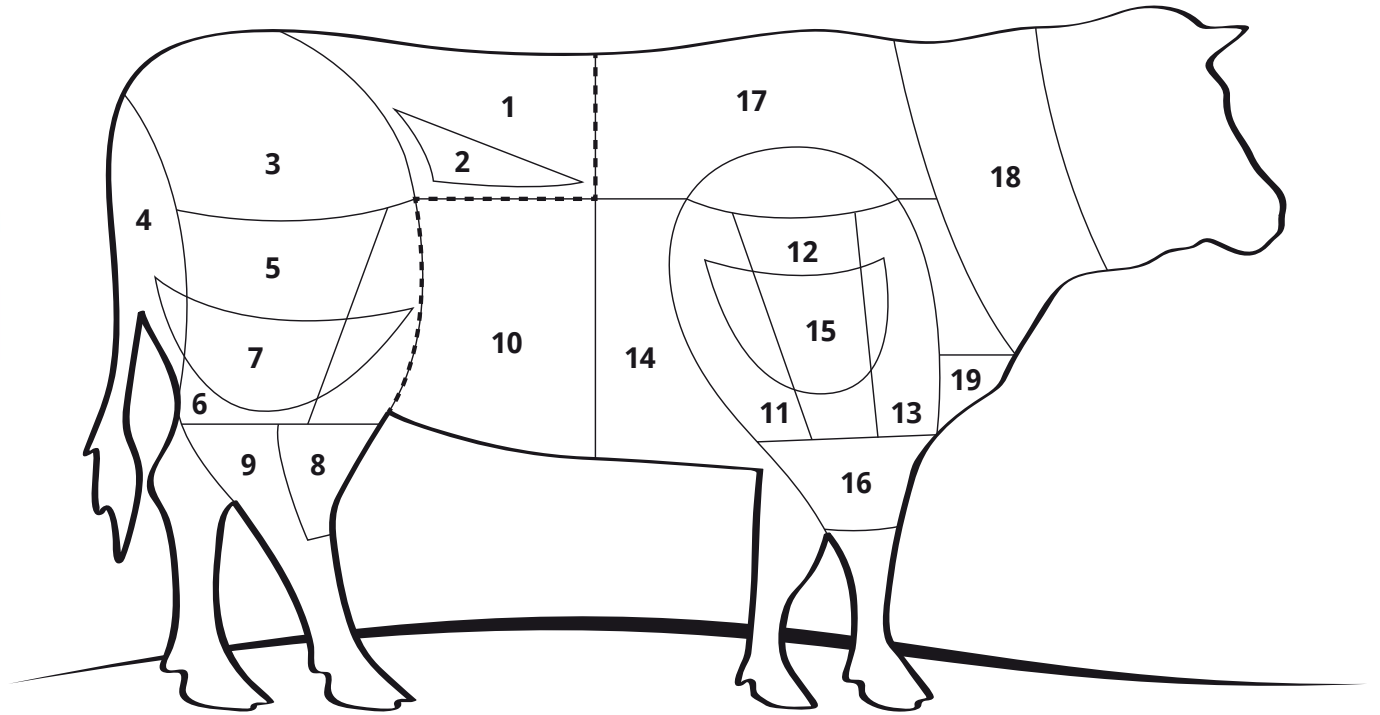
## Eggs in bulk

	Description	Weight category	Eggs per package	Eggs per box	Boxes per layer	Layers per pallet	Shelf life (days)
<b>12621</b>	Size S eggs, bulk x180	Ⓢ	30	180	8	4	28
<b>12834</b>	Size M eggs, bulk x90	Ⓜ	30	90	8	6	28
<b>12832</b>	Size M eggs, bulk x90 for pasta	Ⓜ	30	90	8	6	28
<b>12613</b>	Size M eggs, bulk x180	Ⓜ	30	180	8	4	28
<b>12718</b>	Size M eggs, bulk x180 for pasta	Ⓜ	180	180	6	4	28
<b>12833</b>	Size L eggs, bulk x90	Ⓛ	30	90	8	6	28
<b>12837</b>	Size L sf x90 box for pasta	Ⓛ	30	90	8	6	28
<b>12612</b>	Size L eggs, bulk x180	Ⓛ	30	180	8	4	28
<b>12831</b>	Size L eggs, bulk x180 for pasta	Ⓛ	30	180	8	4	28
<b>12654</b>	Size XL eggs, bulk x100	ⓍⓁ	20	100	8	4	28
<b>12659</b>	Size XL eggs, bulk x100 for pasta	ⓍⓁ	20	100	8	4	28



# MISTER MEAT

# ILLUSTRATION OF ANATOMICAL CUTS



The forequarter and hindquarter split is between ribs 5 and 6.

**Mister MEAT**

Amadori also supplies red meat. A full range of fresh, vacuum-packed meat that can be selected by type, origin and cut. The assortment includes products from the most prized meat-producing nations (Italy, Ireland, Argentina, Scotland, Denmark, Austria, Germany and Poland). Much care and dedication goes into the choice of meats, which Amadori then follows every step of the way, packaging them in the place of slaughter or in specialist food processing plants.

<b>1</b>	<b>Loin / Roast Beef</b>
<b>2</b>	<b>Fillet</b>
<b>3</b>	<b>Rump</b>
<b>4</b>	<b>Eye of round</b>
<b>5</b>	<b>Silverside</b>
<b>6</b>	<b>Knuckle</b>
<b>7</b>	<b>Topside</b>
<b>8</b>	<b>Heel</b>
<b>9</b>	<b>Back shank</b>

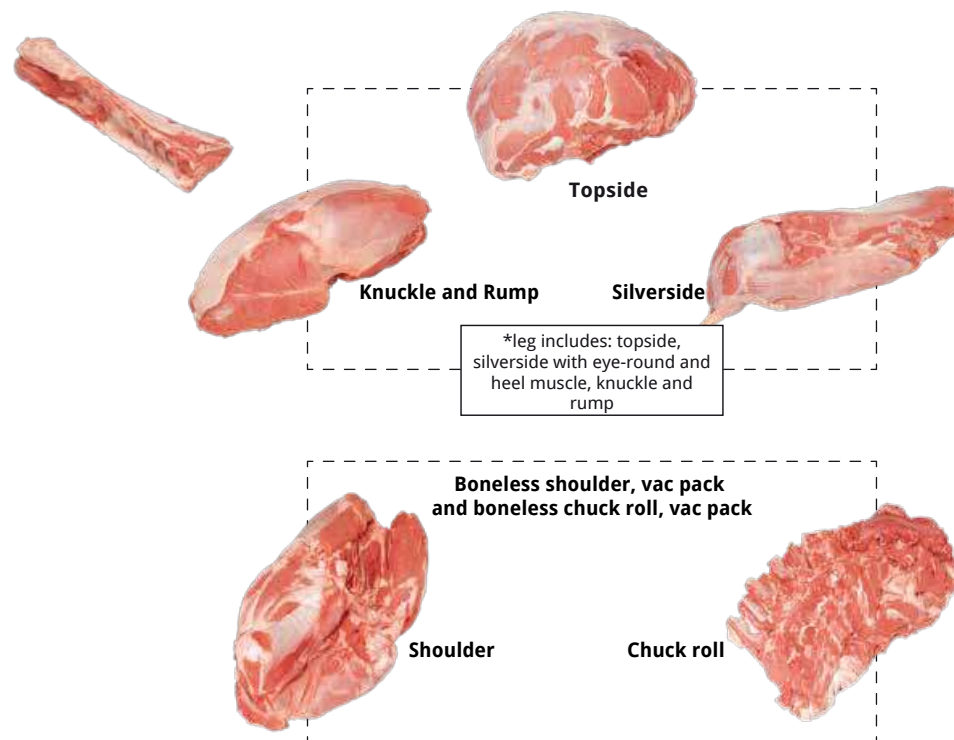
<b>10</b>	<b>Belly</b>
<b>11</b>	<b>LMC special trim</b>
<b>12</b>	<b>Trimmed feather blade</b>
<b>13</b>	<b>Chuck tender</b>
<b>14</b>	<b>Brisket</b>
<b>15</b>	<b>LMC</b>
<b>16</b>	<b>Shin</b>
<b>17</b>	<b>Chuck roll</b>
<b>18</b>	<b>Chuck neck</b>
<b>19</b>	<b>Brisket</b>





# MISTER MEAT

# LEG, LOIN, SHOULDER / CHUCK ROLL/ LEG, VEAL RED LOIN



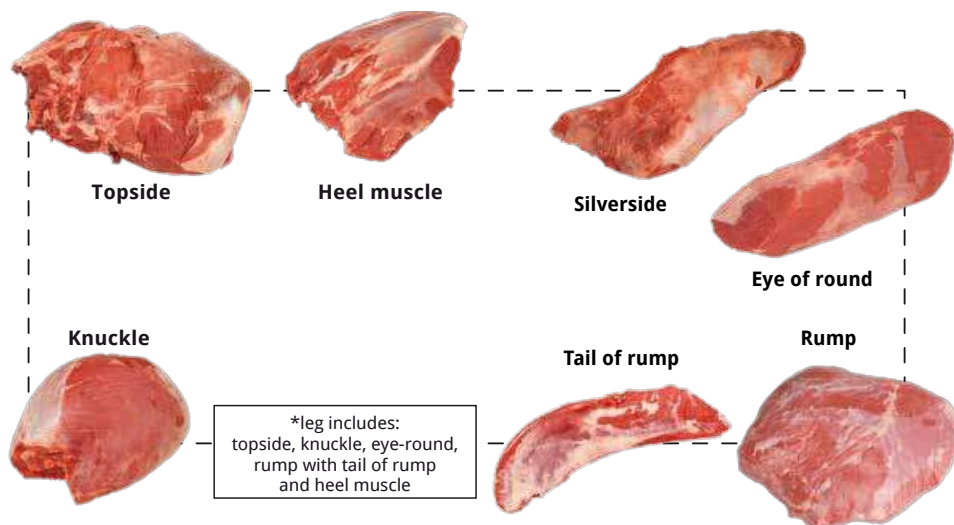
## Veal up to 8 months

	Description	Origin	Pieces per package	Package weight (kg)	Pack. per CRT	CRT weight (kg)	Shelf life	Notes
<b>36298</b>	Leg of veal, 3 pieces, vac pack	EU	1	6,000	3	18,00	30	Knuckle-rump, topside and silverside, with eye round
<b>36612</b>	Leg of veal, 3 pieces, vac pack	Italian	1	5,000	3	15,00	30	Knuckle-rump, topside and silverside, with eye round
<b>36641</b>	Half leg of veal, 3 pieces, colour	EU	1	5,500	3	16,50	30	
<b>36295</b>	Veal loin, bone-in, vac pack	EU	1	8,500	1	8,50	30	One loin cut in half
<b>36613</b>	Veal loin, bone-in, vac pack	Italian	1	10,000	1	10,00	30	One loin cut in half
<b>36257</b>	Veal topside, vac pack	EU	1	4,000	2	8,00	30	
<b>36266</b>	Boneless veal, untrimmed, vac pack	EU	1	5,000	2	10,00	30	
<b>36265</b>	Boneless chuck roll, vac pack	EU	1	5,500	2	11,00	30	
<b>36273</b>	Shank with bone, vac pack	EU	1	2,000	4	8,00	30	

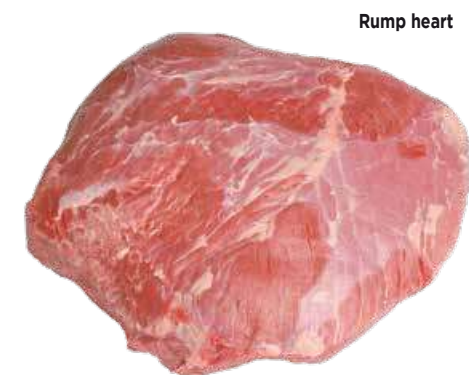
## Beef (red veal), 8-12 months

	Description	Origin	Pieces per package	Package weight (kg)	Pack. per CRT	CRT weight (kg)	Shelf life
<b>36275</b>	Beef loin with fillet of red veal, vac pack	EU	1	10,000	2	20,00	30

# MISTER MEAT



# BONELESS SHANK / RUMP



The rump heart is the section continuing off the loin. It is one of the more noble leg cuts. It is used for:

- Pot roasts, stews, roast beef :
- Grilled steak
- Oven roasts.

An inexperienced chef with a good imagination could come up with a million things to do with a rump.

## Boneless shank

	Description	Origin	Pieces per package	Package weight (kg)	Pack. per CRT	CRT weight (kg)	Shelf life	Notes
<b>36982</b>	Beef leg, 5 cuts, vac pack	France	1	10,000	5	50,00	30	Knuckle, rump with tail of rump, topside, silverside, with eye of round and heel muscle
<b>36935</b>	Boneless beef leg, heifer Poland	Poland	1	4,57	3,5	16	30	

## Lean beef shank pieces

<b>36232</b>	Beef, young bull	Ireland	1	3,5	3	10,50	30	
--------------	------------------	---------	---	-----	---	-------	----	--

## Rump

	Description	Origin	Pieces per package	Package weight (kg)	Pack. per CRT	CRT weight (kg)	Shelf life
<b>36626</b>	Beef rump-heart, vac pack fr	France	1	6,500	2	13,00	30
<b>36233</b>	Irish beef rump, vac pack vac pack	Ireland	1	3,750	4	15	30
<b>36926</b>	Beef rump, vac pack	Poland	1	3,000	2	6,00	30
<b>36346</b>	Beef rump-heart, vac pack	Argentina	1	2,700	5	13,50	120
<b>36980</b>	Beef rump-heart, van pac	Germany	1	4,500	2	9,00	30





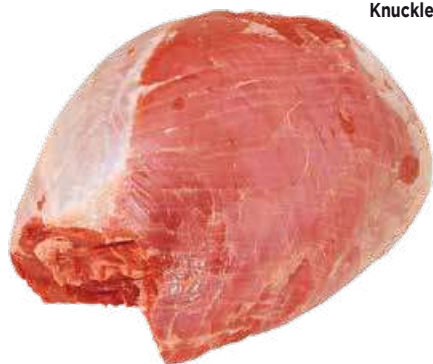
# MISTER MEAT

# KNUCKLE / TOPSIDE

Its bony anatomical base is the entire length of the thigh bone and the distal end of the kneecap.

It is a prime cut and can be cooked in a variety of ways, either boiled or braised, in pot roasts and stewed “cacciatora” style. It provides excellent steaks and cutlets.

The primary cooking method is as a casserole with plenty liquid, preferably wine or beer.



**Knuckle**

This cut fully occupies the inner thigh area and is almost triangular and/or round in shape.

In terms of prize cuts, it rates with the rump: this makes it ideal for a wide range of uses.

The topside can be used for a classic steak or cutlet.

It is also perfect for breaded cutlets and all types of oven cooking.



**Topside**

## Knuc

	Description	Origin	Pieces per package	Package weight (kg)	Pack. per CRT	CRT weight (kg)	Shelf life
<b>36628</b>	Trimmed beef knuckle, fresh, vac pack	France	1	8,000	2	16,00	30
<b>36981</b>	Boneless knuckle, vac pack	Ireland	1	6,000	2	12,00	30
<b>36959</b>	Baby Beef knuckle, vac pack	Denmark	1	4,000	2	8,00	30
<b>36927</b>	Polish beef knuckle, vac pack	Poland	1	5,250	2	10,50	30
<b>36235</b>	Trimmed beef knuckle, vac pack	Germany	1	6,000	2	12,00	30

## Tops

	Description	Origin	Pieces per package	Package weight (kg)	Pack. per CRT	CRT weight (kg)	Shelf life
<b>36627</b>	Beef topside, vac pack	France	1	14,000	1	14,00	30
<b>36344</b>	Baby beef topside, vac pack	Denmark	1	7,000	2	14,00	36
<b>36236</b>	Beef, topside, fr vac pack	Poland	1	9,500	1	9,50	30



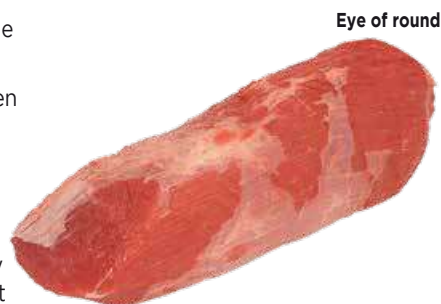
# MISTER MEAT

This cut occupies the hind section of the leg.

To locate it, slice into the space between the muscles between the topside and silverside.

It is a prize cut which is ideal for cutlets and roast beef in particular.

An untrained or inexperienced eye may mistake a well-served portion for a fillet steak.



**Eye of round**

## Eye of round

	Description	Origin	Pieces per package	Package weight (kg)	Pack. per CRT	CRT weight (kg)	Shelf life
<b>36629</b>	Beef eye of round, vac pack	France	1	4,250	2	8,50	30
<b>36984</b>	Boneless beef eye of round, vac pack	Ireland	1	2,500	2	5,00	30
<b>36985</b>	Baby beef eye of round, vac pack	Denmark	1	1,900	5	9,50	30
<b>36928</b>	Beef eye of round, vac pack	Poland	1	2,500	2	5,00	30
<b>36276</b>	Beef eye of round, vac pack	Germany	1	3,500	2	7,00	30

# EYE OF ROUND / SILVERSIDE

This cut occupies the lateral or posterior region of the leg.

It is rectangular in shape and is assessed in terms of the height, species and age of the animal.

It is not a gristly cut (like muscles) but it is not very tender.

Cross cuts are used for cutlets, steaks, roast beef, pot roasts, stews and roasts.



**Silverside**

## Silverside

	Description	Origin	Pieces per package	Package weight (kg)	Pack. per CRT	CRT weight (kg)	Shelf life	Note
<b>36293</b>	Beef silverside, vac pack	Germany	1	6,500	2	13,00	30	Squared
<b>36929</b>	Beef silverside, vac pack	Poland	1	4,250	2	8,50	30	Squared

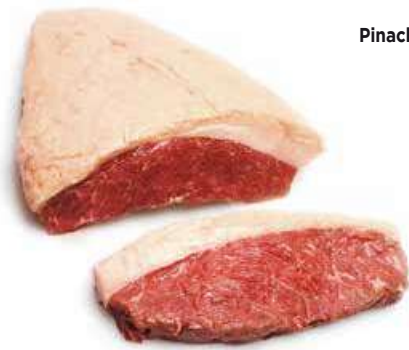




# MISTER MEAT

# PICANHA (TOP SIRLOIN CAP) TAIL OF RUMP

The Picanha cut is popular in Brazil, and is known as the top sirloin cap. It normally weighs 1-1.1kg and is triangular in shape with a 1cm-layer of fat on one side.



**Picanha**

It is cut from the back of the animal, right under the knuckle, and is ideal for meatloaf, stew, roast or rolled beef.



**Tail of rump**

## Picanha

	Description	Origin	Pieces per package	Package weight (kg)	Pack. per CRT	CRT weight (kg)	Shelf life
<b>36983</b>	Picanha beef EU vac pack	Ireland	1	1,200	5	6,00	30

## Tail of rump

	Description	Origin	Pieces per package	Package weight (kg)	Pack. per CRT	CRT weight (kg)	Shelf life
<b>36296</b>	Tail of rump beef	France	1	2,100	5	10,50	30

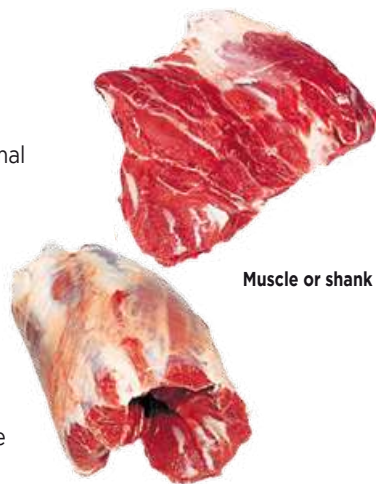
# MISTER MEAT



In anatomical terms, this is the part of the animal that produces movement.

This muscle is normally boiled due to the very thin layer of connective bone between one muscle and another (also called “osso buco”) which makes this cut especially tasty.

The shank can be boiled, stewed, used in pot roasts or braised: cooking in this way is very economical, as adding mashed potatoes or polenta to the sauce significantly increases the portion sizes or numbers.



Muscle or shank

## Muscle or shank

	Description	Origin	Pieces per package	Package weight (kg)	Pack. per CRT	CRT weight (kg)	Shelf life
<b>36631</b>	Beef hind muscle, vac pack	France	1	3,500	4	14,00	30
<b>36270</b>	Beef hind muscle, vac pack	Ireland	1	2,250	4	9,00	30
<b>36967</b>	Beef hind muscle, vac pack	Poland	1	2,400	4	9,60	30

# BACK SHANK HEEL MUSCLE OR HEEL / LOIN

This is from the hind quarter of the animal, near the leg. It is made up of a group of muscles and is highly regarded in culinary terms.

To locate it, find the Achilles tendon and separate the muscle mass that partly surrounds the posterior section of the shin bone.

This cut can be cut in a specific way into steaks.

It is very good when cooked in liquid: stews, pot roasts, braised and all types of casserole.

It is also a good cut to prepare by boiling.



Heel muscle

## Heel muscle

	Description	Origin	Pieces per package	Package weight (kg)	Pack. per CRT	CRT weight (kg)	Shelf life
<b>36630</b>	Beef heel muscle, vac pack	France	1	4,000	4	16,00	30
<b>36269</b>	Beef heel muscle, vac pack	Ireland	1	2,500	4	10,00	30
<b>36968</b>	Beef heel muscle, vac pack	Poland	1	2,500	4	10,00	30

This cut can be easily recognized in its natural form.

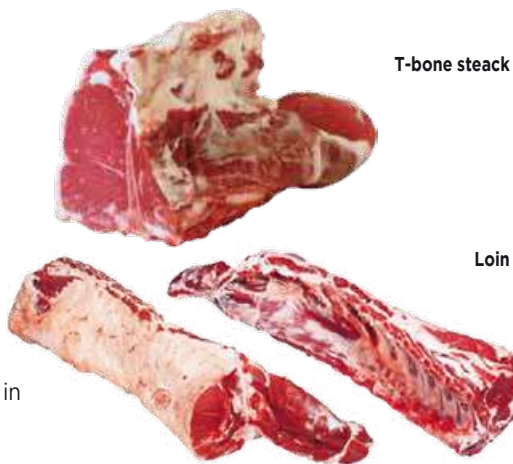
The traditional “Florentine “ is a beefsteak with an inverted T-shaped bone that must always include the tenderloin steak.

This steak is normally thick, not beaten and cooked on cooling open coals.

The meat should only be salted after

blood has started to ripple from the meat; turn once and do not cook in sauce.

If the bone has been removed, then it is okay to cook in sauce.



T-bone steak

Loin

## Loin

	Description	Origin	Pieces per package	Package weight (kg)	Pack. per CRT	CRT weight (kg)	Shelf life	Note
<b>36272</b>	Beef T-bone steak, 3-bone and fillet	Ireland	1	12,000	1	12,00	30	
<b>36342</b>	Baby beef loin with fillet, vac pack	Denmark	1	14,000	1	14,00	30	1 loin, bone-in, cut in half
<b>36238</b>	Beef carvery rib, vac pack	Ireland (female, 6-8))	1	12,500	1	12,50	30	
<b>36936</b>	Heifer loin, bone-in and fillet	Poland	1	8,500	2	17,00	40	
<b>36271</b>	Beef loin with fillet, vac pack	Germany	1	24,000	1	24,00	30	1 loin, bone-in, cut in half





# MISTER MEAT

# BEEF RIB / BONELESS LOIN OR STRIP LOIN

**Carvery rib or Beef Rib**



This cut can be easily recognized in its natural form. When the vertebrae and ribs (6/8) are present, the cut is called Beef Rib.

This steak is normally thick, not beaten and cooked on cooling open coals.

The meat should only be salted after blood has started to ripple from the meat; turn once and do not cook in sauce.

If the bone has been removed, then the meat can be cooked in any sauce.

This steak is normally thick, not beaten and cooked on cooling open coals.

The meat should only be salted after blood has started to ripple from the meat; turn once and do not cook in sauce.

If the bone has been removed, then the meat can be cooked in any sauce.



**Strip loin**

## Beef rib with bone

	Description	Origin	Pieces per package	Package weight (kg)	Pack. per CRT	CRT weight (kg)	Shelf life	Note
<b>36648</b>	Beef Rib, cap off	France	1	6,000	2	12,00	30	
<b>36187</b>	Beef carvery rib, vac pack	Ireland	1	4,500	2	9,00	34	Beef rib, 5-bone, stripped
<b>01984</b>	Irish beef carvery rib, with cap, vac pack	Ireland	1	8,500	1	8,50	30	

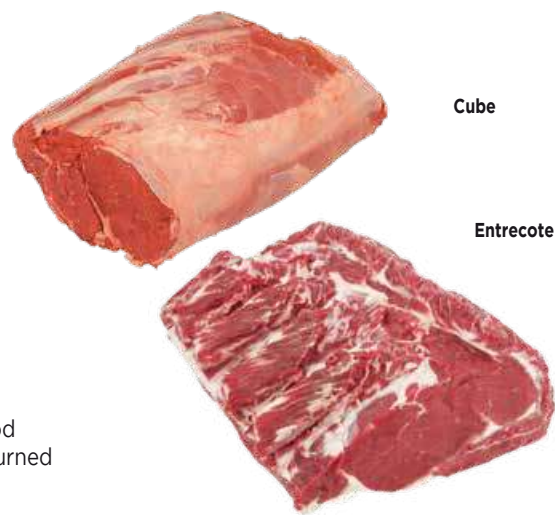
## Boneless loin, 8 ribs

	Description	Origin	Pieces per package	Package weight (kg)	Pack. per CRT	CRT weight (kg)	Shelf life	Note
<b>36931</b>	Boneless Beef Loin, vac pack	Poland	1	6,000	2	12,00	30	One Loin with cup

## Roast beef

<b>36639</b>	Beef strip loin	France	1	5,000	2	10,00	20	One strip loin cut into two pieces
<b>36337</b>	Irish 3-rib, boneless beef strip loin, vac pack	Ireland	1	6,500	2	13,00	30	
<b>36370</b>	Boneless beef strip loin, vac pack	Argentina	1	5,000	3	15,00	120	Squared

# MISTER MEAT



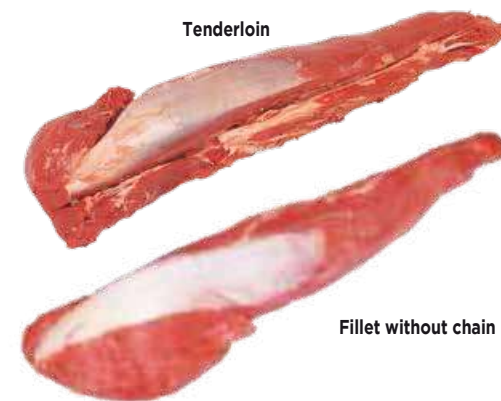
This steak is usually grilled, not beaten and cooked on cooling open coals.

The meat should only be salted after blood has started to ripple from the meat and turned once only.

## Entrecote

	Description	Origin	Pieces per package	Package weight (kg)	Pack. per CRT	CRT weight (kg)	Shelf life	Note
<b>36625</b>	Beef Entrecote, cap-off	France	1	6,000	2	12,00	30	
<b>36261</b>	Beef Entrecote, vac pack	Ireland	1	3,500	2	7,00	34	Cube roll processing
<b>36382</b>	Beef Entrecote, vac pack	Scotland	1	3,000	2	6,00	30	Cube roll processing
<b>36240</b>	Beef Entrecote, vac pack	Denmark (female, 6-8 years)	1	5,000	2	10,00	30	
<b>36283</b>	Beef Entrecote, vac pack	Poland	1	3,250	2	6,50	30	Cube roll processing
<b>36367</b>	Beef Entrecote, vac pack	Argentina	1	2,000	6	12,00	120	Cube roll processing
<b>36640</b>	Beef Entrecote, vac pack	Germany	1	3,500	2	7,00	30	Cube roll processing

# ENTRECOTE OR CUBE ROLL / FILLET



This meat comes from the lumbosacral region: the posterior part (head) lies next to the rump, the middle (body) and front (tail) parts lie below the vertebrae of the lower back and spine.

It is one of the most popular cuts and therefore the most expensive.

In Italy, the request for fillet steak outweighs the actual quantity that can be produced; an average steer or heifer gives no more than two fillets, equalling no more than 5/6kg of beef.

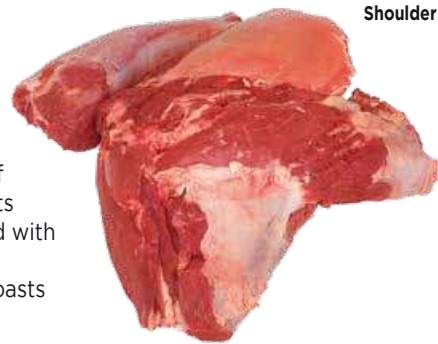
## Fillet

	Description	Origin	Pieces per package	Package weight (kg)	Pack. per CRT	CRT weight (kg)	Shelf life	Note
<b>36635</b>	Beef fillet	France	1	4,000	2	8,00	30	
<b>36256</b>	Irish heifer fillet, vac pack	Ireland	1	2,400	2	4,80	34	
<b>36288</b>	Beef fillet	Poland	1	2,800	2	5,60	30	
<b>36988</b>	Beef fillet, vac pack	Argentina	1	1,650	6	9,90	120	Without chain





# MISTER MEAT



Shoulder

The shoulder is made up of various cuts:

- LMC: used for steaks, escalopes and braised beef
- Chuck tender: prepared by boiling or in pot roasts
- Trimmed feather blade: always boiled and served with green vegetable sauce.
- Shoulder muscle: prepared by boiling or in pot roasts
- Shin: prepared by boiling or in stews.

## Shoulder

	Description	Origin	Pieces per package	Package weight (kg)	Pack. per CRT	CRT weight (kg)	Shelf life	Note
36933	Boneless beef shoulder, vac pack	Poland	1	10,000	1	10,00	30	Trimmed

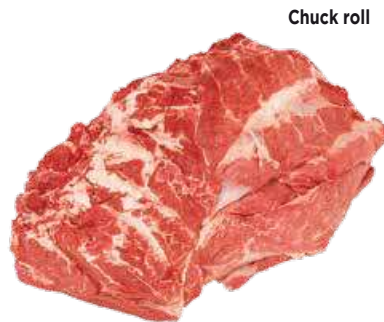
Generally, this cut is almost parallelepiped in shape.

It is located between the end of the loin and the connection to the head (occipital).

It includes the neck or chuck roll.

The meat is extremely tasty and in Italian, is called the "chef's bite": it is prepared by boiling or in pot roasts, or minced for use in a tasty meat sauce.

Boneless steaks can be cut from the chuck roll, to be grilled or baked in foil.

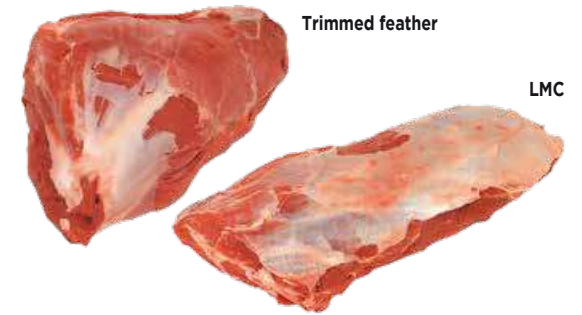


Chuck roll

## Chuck (neck or chuck roll)

	Description	Origin	Pieces per package	Package weight (kg)	Pack. per CRT	CRT weight (kg)	Shelf life
36181	Beef chuck roll	Ireland	1	5,000	2	10,00	34
02807	Beef chuck roll, vac pack	Scotland	2	9,000	1	9,000	30
36292	Beef shoulder/chuck, vac pack	Denmark	1	6,750	2	13,50	30
36934	Boneless chuck, vac pack	Poland	1	15,000	1	15,00	30
36644	Boneless beef chuck, vac pack	Germany	1	15,000	1	15,00	40

# SHOULDER / SHOULDER CUTS / CHUCK ROLL/ TRIPE / OFFAL



Trimmed feather

LMC

The shoulder is made up of various cuts:

- LMC: used for steaks, escalopes and braised beef
- Trimmed feather blade: always boiled and served with green vegetable sauce.

## Shoulder LMC

	Description	Origin	Pieces per package	Package weight (kg)	Pack. per CRT	CRT weight (kg)	Shelf life	Note
36182	Irish beef LMC, vac pack	Ireland	1	2,750	2	5,50	34	

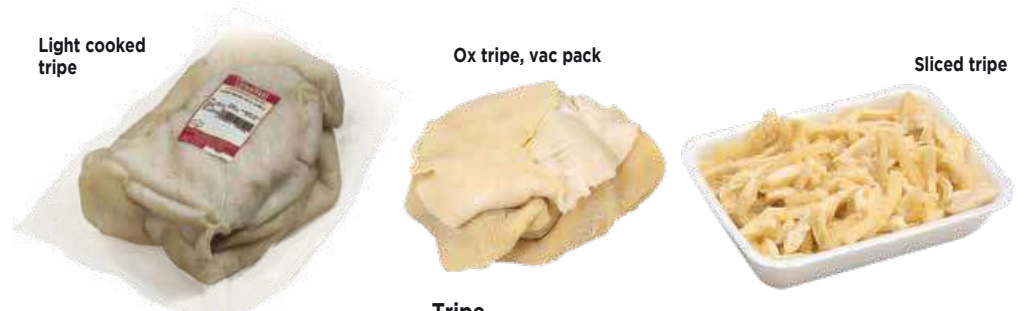
## Trimmed feather

36185	Beef feather blade, vac pack	Ireland	1	2,800	3	8,40	34	
36379	Beef feather blade, vac pack	Scotland	1	2,250	3	6,75	34	

Light cooked tripe

Ox tripe, vac pack

Sliced tripe



## Tripe

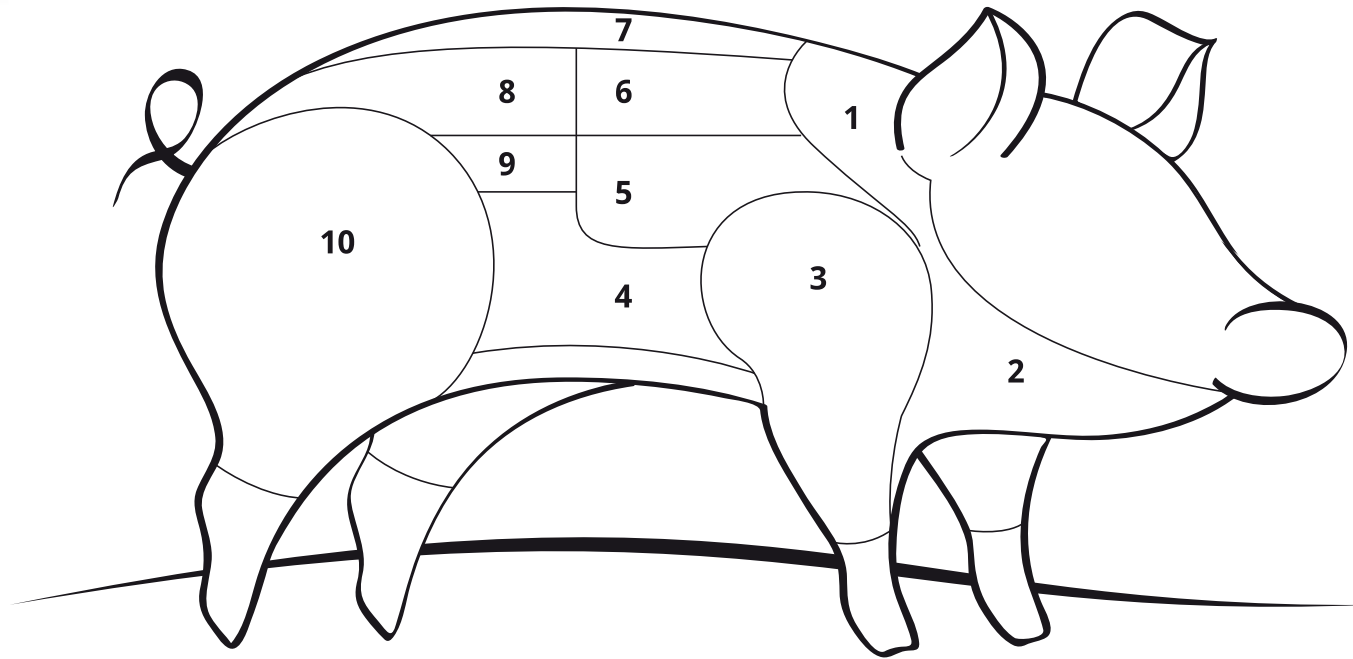
	Description	Origin	Pieces per package	Package weight (kg)	Pack. per CRT	CRT weight (kg)	Shelf life
40201	Light cooked tripe	-	1	5,000	1	5,00	21
40203	Dark cooked tripe	-	1	5,000	1	5,00	21
35199	Ox tripe, vac pack	-	1	5,000	1	5,00	21
40204	Sliced tripe, vac pack	-	0	700	4	2,80	21



Skirt steaks

## Offal

	Description	Origin	Pieces per package	Package weight (kg)	Pack. per CRT	CRT weight (kg)	Shelf life
36268	Beef skirt steaks, vac pack	-	1	700	16	12,20	30



<b>1</b>	<b>Pork Neck Fillet</b>
<b>2</b>	<b>Throat or Cheek</b>
<b>3</b>	<b>Shoulder</b>
<b>4</b>	<b>Bacon (belly)</b>
<b>5</b>	<b>Ribs</b>

<b>6</b>	<b>Pork chops</b>
<b>7</b>	<b>Lard</b>
<b>8</b>	<b>Pork loin</b>
<b>9</b>	<b>Fillet</b>
<b>10</b>	<b>Leg</b>

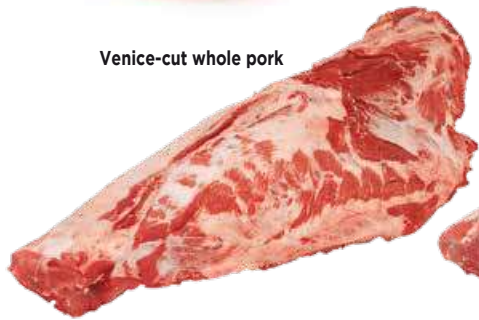


# MISTER MEAT



# PORK: WHOLE PORK AND VENICE-CUT PORK LOIN / BOLOGNA-CUT PORK LOIN AND BONELESS SHOULDER / NECK CHOPS AND RIBS

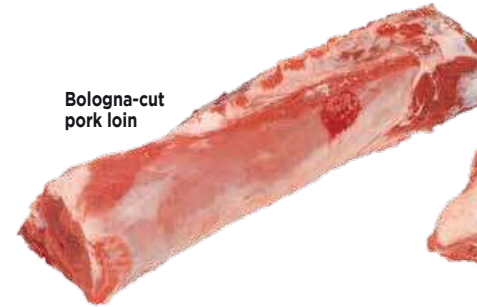
Venice-cut whole pork



Venice-cut pork loin



Bologna-cut pork loin



Boneless shoulder



Boxed fresh pork

	Description	Pieces per package	Package weight (kg)	Pack. per CRT	CRT weight (kg)	Shelf life
<b>36186</b>	Whole pork, GMO-free supply chain	1	15,000	1	15,00	7
<b>36809</b>	Whole pork	1	15,000	1	15,00	7
<b>36356</b>	Venice-cut pork loin, GMO-free supply chain	1	11,000	2	22,00	7
<b>36808</b>	Venice-cut pork loin	1	11,000	2	22,00	7

Boxed fresh pork

	Description	Pieces per package	Package weight (kg)	Pack. per CRT	CRT weight (kg)	Shelf life
<b>36210</b>	Bologna-cut pork loin, GMO-free supply chain	1	7,000	2	14,00	7
<b>36807</b>	Bologna-cut pork loin	1	7,000	2	14,00	7
<b>36212</b>	Pork shoulder, boneless, GMO-free supply chain	1	6,750	2	13,50	7
<b>36811</b>	Boneless, rindless pork shoulder	1	6,750	2	13,50	7

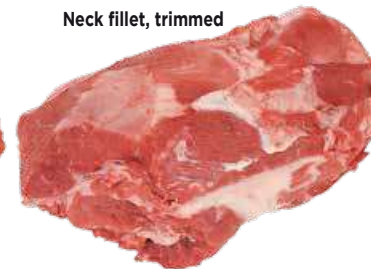
Neck fillet, bone-in



Ribs



Neck fillet, trimmed



Boxed fresh pork

	Description	Pieces per package	Package weight (kg)	Pack. per CRT	CRT weight (kg)	Shelf life
<b>36224</b>	Pork neck fillet, bone-in, GMO-free supply chain	1	3,500	2	7,00	7
<b>36813</b>	Pork neck fillet, bone-in	1	3,500	2	7,00	7
<b>36219</b>	Pork neck fillet, trimmed, GMO-free supply chain	1	2,833	3	8,50	7
<b>36812</b>	Pork neck fillet, boneless, trimmed	1	2,833	3	8,50	7
<b>36215</b>	Pork ribs, GMO-free supply chain	1	3,000	3	9,00	7
<b>36810</b>	Pork ribs	1	1,833	3	5,50	7



# MISTER MEAT

## PORK: BACON (BELLY) AND DRY-CURED HAM / ITALIAN AND INTERNATIONAL BONELESS LOIN AND TENDERLOIN, VACUUM-PACKED

Boneless rindless belly, without fat flanchet



Italian boneless loin, without chain



Tenderloin



Boxed fresh pork

	Description	Pieces per package	Package weight (kg)	Pack. per CRT	CRT weight (kg)	Shelf life
<b>36815</b>	Bacon (belly), rind-on, without flanchet fat	1	6,500	2	13,00	7
<b>36814</b>	Bacon (belly), rindless, without flanchet fat	1	8,500	2	17,00	7
<b>36816</b>	Leg, gammon cut	1	13,000	1	13,00	7

Fresh Italian pork, vac pack

	Description	Pieces per package	Package weight (kg)	Pack. per CRT	CRT weight (kg)	Shelf life
<b>36222</b>	Pork loin, vac pack	1	4,500	3	13,50	21
<b>36211</b>	Pork loin, vac pack	3	1,250	4	5,00	21



International pork loin, without chain



Fresh international pork, vac pack

	Description	Pieces per package	Package weight (kg)	Pack. per CRT	CRT weight (kg)	Shelf life
<b>36555</b>	Pork loin, vac pack	1	4,000	3	12,00	21
<b>36247</b>	Pork shoulder, boneless, rindless, vac pack	1	4,500	4	18,00	21
<b>36248</b>	Pork neck fillet, trimmed, French, vac pack	1	2,500	8	20,00	21
<b>36249</b>	Bacon (belly), boneless (single ribbed), rind-on, long squared, vac pack	1	3,375	4	13,50	21
<b>36199</b>	Bacon (belly), with ribs, vac pack	1	6,000	2	12,00	14
<b>36200</b>	Deboned gammon, vac pack	1	6,000	2	12,00	21
<b>36244</b>	Pork middles, rind-on	1	9,00	2	18,00	21



# MISTER MEAT



# LAMB: WHOLE, WALES PGI, AND MINI SKEWERS / HORSE MEAT

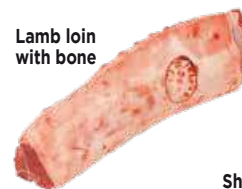
Whole lamb



Boxed lamb

	Description	Pieces per package	Package weight (kg)	Pack. per CRT	CRT weight (kg)	Shelf life
40102	Fresh lamb, head and liver, 5/8 kg	1	7,000	1	7,00	7
40103	Fresh lamb, head and liver, 9/12 kg	1	10,000	1	10,00	7
40119	Fresh lamb, head and liver, 12/14 kg	1	13,000	1	13,00	7
40115	Whole lamb, light, boxed	1	13,000	1	13,00	7

Lamb loin with bone



Leg of lamb



Shoulder

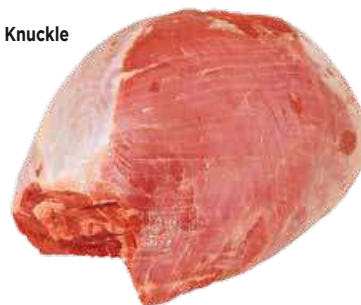


Mini skewers

Lamb, vac pack

	Description	Pieces per package	Package weight (kg)	Pack. per CRT	CRT weight (kg)	Shelf life
40112	Lamb loin with bone, PGI, vac pack	1	3,000	4	12,00	34
40114	Lamb shoulder, squared cut, PGI, vac pack	1	2,375	4	9,50	34
40101	Leg of lamb, PGI, vac pack	1	2,833	6	17,00	34
40106	Breast of lamb roll, PGI, vac pack	1	0,500	8	4,00	28
40122	Abruzzo lamb skewers, prot. atmosphere	22	0,465	4	1,85	8
40123	Mutton skewers, prot. atmosphere	22	0,465	8	3,75	8

Knuckle



Cutlets



Horse meat

	Description	Pieces per package	Package weight (kg)	Pack. per CRT	CRT weight (kg)	Shelf life
36363	Horse knuckle, vac pack	1	6,000	2	12,00	90
36360	Premium horse meat cutlets	4	0,290	6	1,74	21



## CORTE ANTICA

## CURED HAM / COOKED HAM



### Cured hams

	Description	UM	Pack. weight (kg)	Pieces per pack.	Pack. per CRT	CRT weight (kg)	Shelf life
41501	Parma ham, boneless, 16 months	kg	8	1	1	8	180
41500	Parma ham, bone-in, 16 months	kg	12	1	1	12	
41517	Parma ham, boneless, circle pressed, 16 months	kg	8,5	1	1	8,5	180
41516	Parma ham, boneless, reserve	kg	9,5	1	1	9,5	180
41515	Parma ham, bone-in, reserve	kg	12	1	1	12	
41529	Cured ham, Italian, boneless, circle pressed, light weight	kg	7	1	1	7	180
41503	Cured ham, Italian, boneless, 12 months	kg	7	1	1	7	180
41509	Cured ham, Italian, bone-in, 12 months	kg	10	1	1	10	
41518	Cured ham, Italian, boneless, circle pressed	kg	7,5	1	1	7,5	180
41508	Cured ham, Marchigiano, bone-in, 16 months	kg	11	1	2	22	
41504	Cured ham, Duca, boneless, 8 months	kg	6	1	1	6	180
41519	Cured ham, duca, boneless, circle pressed	kg	6	1	1	6	180
41586	Cured ham, boneless, squared	kg	6,5	1	1	6,5	180
41505	Cured ham, boneless, squared, pressed	kg	5	1	1	5	180
41528	Dry-cured ham, Italian, boneless light weight	kg	6,5	1	1	6,5	180
41552	Aged, dry-cured sgambato boneless ham	kg	6,5	1	1	6,5	

### Cooked hams

	Description	UM	Pack. weight (kg)	Pieces per pack.	Pack. per CRT	CRT weight (kg)	Shelf life
41524	Cooked ham, prestige	kg	8	1	1	8	180
41512	Cooked ham, silver	kg	8	1	1	8	120
41523	Cooked ham, Premiere top quality	kg	8	1	1	8	180
41513	Cooked ham, polyphosphate-free	kg	9	1	1	9	120
41535	Cooked ham, half	kg	4,5	1	2	9	120
41521	Cooked shoulder of ham, rosatella, bottle pressed	kg	8	1	2	16	120
41525	Cooked shoulder of ham, tris	kg	8	1	2	16	180
41520	Cooked shoulder of ham, rosatella toast	kg	1,5	1	4	6	120
41538	Cooked ham	kg	9	1		120	120



The quality and flavours of Corte Antica cured meats come from Italy's age-old tradition of making good food, which spans from the careful selection of the meats to the full control and certification of farms. The ingredients are those used in traditional delicatessens, the recipes the same as those passed down from rural culture, and likewise the care taken in each step of the production process. A variety of mouth-watering foods, guaranteed by Amadori's experience.







# CORTE ANTICA

# MORTADELLA / SALAMI / COPPA DRY-CURED NECK FILLET / BACON (BELLY) AND OTHER PRODUCTS



## Mortadelle

	Description	UM	Pack. weight (kg)	Pieces per pack.	Pack. per CRT	CRT weight (kg)	Shelf life
<b>41531</b>	Mortadella duchessa with pistachio	kg	10	1	1	10	120
<b>41532</b>	Mortadella duchessa	kg	10	1	1	10	120
<b>41533</b>	Mortadella small 2,5 kg	kg	2,5	1	2	5	80
<b>41536</b>	Mortadella le torri	kg	7,5	1	1	7,5	100
<b>41537</b>	Mortadella le torri with pistachio	kg	7,5	1	1	7,5	100



## Coppe

	Description	UM	Pack. weight (kg)	Pieces per pack.	Pack. per CRT	CRT weight (kg)	Shelf life
<b>41562</b>	Dry-cured neck fillet, bulk	kg	3,8	1	2	7,6	120
<b>41561</b>	Dry-cured neck fillet, vac pack	kg	0,8	1	4	3,2	120



## Salami

	Description	UM	Pack. weight (kg)	Pieces per pack.	Pack. per CRT	CRT weight (kg)	Shelf life
<b>41543</b>	Milano salami, vac pack	kg	2,5	1	1	2,5	120
<b>41544</b>	Hungarian salami, vac pack	kg	2,5	1	1	2,5	120
<b>41551</b>	Corallina salami, bulk	kg	0,8	5	5	4	120
<b>41545</b>	Ventricina salami, vac pack	kg	1,5	1	4	6	120
<b>41541</b>	Nostrano salami, vac pack	kg	1	1	3	3	120
<b>41540</b>	Gentile salami	kg	1	3	3	3	
<b>41547</b>	Spicy salami, straight	kg	1,2	2	3	3,6	120



## Bacon, speck e bresaola

	Description	UM	Pack. weight (kg)	Pieces per pack.	Pack. per CRT	CRT weight (kg)	Shelf life
<b>41572</b>	Bacon (belly), rindless, vac pack	kg	1,8	1	2	3,6	120
<b>41575</b>	Smoked, steamed bacon (belly) - half	kg	2,5	1	2	5	120
<b>41573</b>	Bacon (belly), mild, slab, vac pack	kg	1,3	1	2	2,6	120
<b>41571</b>	Bacon (belly), with neck, rindless, vac pack	kg	2,5	1	2	5	120
<b>41574</b>	Bacon (belly), slab, smoked, vac pack	kg	1,3	1	2	2,5	120
<b>41580</b>	Half speck, vac pack, 16 months	kg	2,5	1	2	5	120
<b>41582</b>	Full speck, vac pack, catering	kg	2,5	1	2	5	120
<b>41581</b>	Bresaola, half, top side (binden)	kg	1,6	1	2	3,2	180



## Calabrian cold cuts

	Description	UM	Pack. weight (kg)	Pieces per pack.	Pack. per CRT	CRT weight (kg)	Shelf life
<b>41612</b>	Calabrian spicy salami, pressed, vac pack	kg	2,1	1	2	4,2	180
<b>41608</b>	Calabrian spicy salami, pressed, vac pack	kg	0,4	1	10	4	180
<b>41607</b>	Calabrian mild salami, vac pack	kg	0,4	1	10	4	180
<b>41603</b>	Calabrian single N'duja ventricina, vac pack	kg	0,56	1	10	5,6	180
<b>41602</b>	Cured pig's cheek, single, vac pack	kg	0,8	1	3	2,4	180



FROZEN

BREADED

retail

# FROZEN

Every challenge has its own temperature: a new range of practical, tasty frozen foods has evolved out of the best of Amadori's fresh products. With 100% Italian chicken and turkey meat and the guaranteed quality that Amadori puts in all its products. A unique taste that no freezer should be without!

**MADE WITH 100% ITALIAN CHICKEN AND TURKEY**



**Nuggets retail**

UM	EAN code	Pack. weight (kg)	Pieces per pack.	Pack. per carton	Approx carton weight (kg)	Shelf life (days)	Packs per layer	Layers per pallet	Boxes per pallet
<b>30670</b>	nr 8006473901914	0,3	16	9	2,7	450	18	7	126



**Gran Burger retail**

UM	EAN code	Pack. weight (kg)	Pieces per pack.	Pack. per carton	Approx carton weight (kg)	Shelf life (days)	Packs per layer	Layers per pallet	Boxes per pallet
<b>30680</b>	nr 8006473903406	0,28	2	9	2,52	450	18	7	126





# FROZEN

# BREADED retail



**Crunchy cutlet** retail

	UM	EAN code	Pack weight (kg)	Pieces per pack	Pack. per carton	Approx carton weight (Kg)	Shelf life (days)	Packs per layer	Layers per pallet	Boxes per pallet
30671	nr	8006473901921	0,3	3	9	2,7	450	18	7	126



**Escalope with spinach** retail

	UM	EAN code	Pack weight (kg)	Pieces per pack	Pack. per carton	Approx carton weight (Kg)	Shelf life (days)	Packs per layer	Layers per pallet	Boxes per pallet
30672	nr	8006473901938	0,3	3	9	2,7	450	18	7	126



**Cordon bleu** retail

	UM	EAN code	Pack weight (kg)	Pieces per pack	Pack. per carton	Approx carton weight (Kg)	Shelf life (days)	Packs per layer	Layers per pallet	Boxes per pallet
30673	nr	8006473901945	0,25	2	9	2,25	450	18	7	126



**Chicken fingers** retail

	UM	EAN code	Pack weight (kg)	Pieces per pack	Pack. per carton	Approx carton weight (Kg)	Shelf life (days)	Packs per layer	Layers per pallet	Boxes per pallet
30850	nr	8006473902218	0,28	10	9	2,52	450	18	7	126



# FROZEN

# BREADED

family



**Nuggets 700g family**

UM	EAN code	Pack. weight (kg)	Pieces per pack.	Pack. per carton	Approx carton weight (Kg)	Shelf life (days)	Packs per layer	Layers per pallet	Boxes per pallet
30675	nr 8006473902003	0,7	37	4	2,8	450	12	12	144



**Gran Burger 700g family**

UM	EAN code	Pack. weight (kg)	Pieces per pack.	Pack. per carton	Approx carton weight (Kg)	Shelf life (days)	Packs per layer	Layers per pallet	Boxes per pallet
30681	nr 8006473903390	0,70	5	4	2,80	450	12	12	144



**Chicken fillet cutlet 700g family**

UM	EAN code	Pack. weight (kg)	Pieces per pack.	Pack. per carton	Approx carton weight (Kg)	Shelf life (days)	Packs per layer	Layers per pallet	Boxes per pallet
30676	nr 8006473902010	0,7	7	4	2,8	450	12	12	144



**Escalope with spinach 700g family**

UM	EAN code	Pack. weight (kg)	Pieces per pack.	Pack. per carton	Approx carton weight (Kg)	Shelf life (days)	Packs per layer	Layers per pallet	Boxes per pallet
30677	nr 8006473902027	0,7	7	4	2,8	450	12	12	144



**Cheese and ham cordon bleu 750g family**

UM	EAN code	Pack. weight (kg)	Pieces per pack.	Pack. per carton	Approx carton weight (Kg)	Shelf life (days)	Packs per layer	Layers per pallet	Boxes per pallet
30678	nr 8006473902034	0,75	6	4	3	450	12	12	144





# FROZEN

# READY-TO-EAT / GLUTEN FREE

retail

family



**Kebab 350g retail**

UM	EAN code	Pack. weight (kg)	Pieces per pack.	Pack. per carton	Approx carton weight (Kg)	Shelf life (days)	Packs per layer	Layers per pallet	Boxes per pallet
30652	nr 8006473901983	0,35	-	6	2,1	450	12	12	144

**Kebab 700g family**

30656	nr 8006473902072	0,7	-	4	2,8	450	12	12	144
-------	------------------	-----	---	---	-----	-----	----	----	-----



**Sliced chicken 350g retail**

UM	EAN code	Pack. weight (kg)	Pieces per pack.	Pack. per carton	Approx carton weight (Kg)	Shelf life (days)	Packs per layer	Layers per pallet	Boxes per pallet
30651	nr 8006473901976	0,35	-	6	2,1	450	12	12	144

**Sliced chicken 700g family**

30655	nr 8006473902065	0,7	-	4	2,8	450	12	12	144
-------	------------------	-----	---	---	-----	-----	----	----	-----



**Chicken strips 350g retail**

UM	EAN code	Pack. weight (kg)	Pieces per pack.	Pack. per carton	Approx carton weight (Kg)	Shelf life (days)	Packs per layer	Layers per pallet	Boxes per pallet
30658	nr 8006473902270	0,35	-	6	2,1	450	12	12	144

**Chicken strips 700g family**

30659	nr 8006473902287	0,7	-	4	2,8	450	12	12	144
-------	------------------	-----	---	---	-----	-----	----	----	-----



**Spicy wings 350g retail**

UM	EAN code	Pack. weight (kg)	Pieces per pack.	Pack. per carton	Approx carton weight (Kg)	Shelf life (days)	Packs per layer	Layers per pallet	Boxes per pallet
30653	nr 8006473901990	0,35	10	6	2,1	365	12	12	144

**Spicy wings 700g family**

30657	nr 8006473902089	0,7	19	4	2,8	365	12	12	144
-------	------------------	-----	----	---	-----	-----	----	----	-----



**Nuggets retail**

UM	EAN code	Pack. weight (kg)	Pieces per pack.	Pack. per carton	Approx carton weight (Kg)	Shelf life (gg)
30668	nr 8006473902836	0,32	16	6	1,92	365



**Chicken fillet cutlet retail**

UM	EAN code	Pack. weight (kg)	Pieces per pack.	Pack. per carton	Approx carton weight (Kg)	Shelf life (gg)
30669	nr 8006473902843	0,3	3	6	1,8	365

# GLUTEN FREE



# FROZEN

# TRADITIONAL

retail

family



**Frozen chicken thighs 1kg family**

UM	EAN code	Pack. weight (kg)	Pieces per pack	Pack. per carton	Approx. carton weight (Kg)	Shelf life (days)	Packs per layer	Layers per pallet	Boxes per pallet
30316 nr	8006473303169	1	7	3	3	720	10	11	110



**Frozen chicken drumsticks 1kg family**

UM	EAN code	Pack. weight (kg)	Pieces per pack	Pack. per carton	Approx. carton weight (Kg)	Shelf life (days)	Packs per layer	Layers per pallet	Boxes per pallet
30315 nr	8006473303152	1	8	3	3	720	10	11	110



**Whole frozen chicken retail**

UM	EAN code	Pack. weight (kg)	Pieces per pack	Pack. per carton	Approx. carton weight (Kg)	Shelf life (days)	Packs per layer	Layers per pallet	Boxes per pallet
30202 kg	2264870000000	1,1	1	6	6,6	720	10	7	70



**Frozen chicken breast 700g family**

UM	EAN code	Pack. weight (kg)	Pieces per pack	Pack. per carton	Approx. carton weight (Kg)	Shelf life (days)	Packs per layer	Layers per pallet	Boxes per pallet
30523 nr	8006473305231	0,7	7	4	2,8	720	10	11	110



**Frozen turkey breast 700g family**

UM	EAN code	Pack. weight (kg)	Pieces per pack	Pack. per carton	Approx. carton weight (Kg)	Shelf life (days)	Packs per layer	Layers per pallet	Boxes per pallet
31514 nr	8006473315148	0,7	7	4	2,8	720	10	11	110



**Frozen chicken legs x 6 retail**

UM	EAN code	Pack. weight (kg)	Pieces per pack	Pack. per carton	Approx. carton weight (Kg)	Shelf life (days)	Packs per layer	Layers per pallet	Boxes per pallet
30391 kg	-	1,38	6	4	5,52	720	4	12	48





# FROZEN

# TRADITIONAL

retail

family



**Frozen chicken breast slices retail**

UM	EAN code	Pack. weight (kg)	Pieces per pack	Pack. per carton	Approx carton weight (Kg)	Shelf life (days)	Packs per layer	Layers per pallet	Boxes per pallet
30499	kg 2522240000000	0,36	3	11	4	720	10	7	70



**Frozen chicken drumsticks retail**

UM	EAN code	Pack. weight (kg)	Pieces per pack	Pack. per carton	Approx carton weight (Kg)	Shelf life (days)	Packs per layer	Layers per pallet	Boxes per pallet
30307	kg 2265050000000	0,4	3	8	3,2	720	10	11	110



**Frozen turkey breast slices retail**

UM	EAN code	Pack. weight (kg)	Pieces per pack	Pack. per carton	Approx carton weight (Kg)	Shelf life (days)	Packs per layer	Layers per pallet	Boxes per pallet
31508	kg 2264980000000	0,36	3	11	4	720	10	7	70



**Frozen chicken pieces retail**

UM	EAN code	Pack. weight (kg)	Pieces per pack	Pack. per carton	Approx carton weight (Kg)	Shelf life (days)	Packs per layer	Layers per pallet	Boxes per pallet
30818	kg 2264990000000	0,54	5	10	5,4	720	10	7	70



**Frozen chicken wings retail**

UM	EAN code	Pack. weight (kg)	Pieces per pack	Pack. per carton	Approx carton weight (Kg)	Shelf life (days)	Packs per layer	Layers per pallet	Boxes per pallet
30403	kg 2265020000000	0,54	6	10	5,4	720	10	7	70



**Frozen classic meatloaf roll retail**

UM	EAN code	Pack. weight (kg)	Pieces per pack	Pack. per carton	Approx carton weight (Kg)	Shelf life (days)	Packs per layer	Layers per pallet	Boxes per pallet
31810	kg -	0,7	1	7	4,9	450	4	16	64

**Frozen mediterranean meatloaf roll retail**

31811	kg -	0,7	1	7	4,9	450	4	16	64
-------	------	-----	---	---	-----	-----	---	----	----

**Frozen rustic meatloaf roll retail**

31809	kg -	0,7	1	7	4,9	450	4	16	64
-------	------	-----	---	---	-----	-----	---	----	----

**Frozen delicate meatloaf roll retail**

31814	kg -	0,7	1	7	4,9	450	4	16	64
-------	------	-----	---	---	-----	-----	---	----	----

**Frozen campagnola meatloaf roll retail**

31812	kg -	0,7	1	7	4,9	450	4	16	64
-------	------	-----	---	---	-----	-----	---	----	----

**Frozen cockerel retail**

UM	EAN code	Pack. weight (kg)	Pieces per pack	Pack. per carton	Approx carton weight (Kg)	Shelf life (days)	Packs per layer	Layers per pallet	Boxes per pallet
36102	kg 2264960000000	0,46	1	12	5,52	540	4	15	60



# FROZEN

# FRANKFURTERS

retail

CHICKEN AND TURKEY REARED WITH NO ANTIBIOTICS



LACTOSE FREE SOURCE OF IODINE



LACTOSE FREE SOURCE OF IODINE

100% chicken/turkey frankfurters, frozen 250g retail

UM	EAN code	Pack. weight (kg)	Pieces per pack.	Pack. per carton	Approx. carton weight (Kg)	Shelf life (days)	Packs per layer	Layers per pallet	Boxes per pallet
42098	nr 8006473903093	0,25	3	12	3	540	16	14	224

100% pork frankfurters, frozen 250g retail

UM	EAN code	Pack. weight (kg)	Pieces per pack.	Pack. per carton	Approx. carton weight (Kg)	Shelf life (days)	Packs per layer	Layers per pallet	Boxes per pallet
42099	nr 8006473903154	0,25	3	12	3	540	16	14	224



LACTOSE FREE



LACTOSE FREE SOURCE OF IODINE

Evviva chicken/turkey frankfurters, frozen 250g retail

UM	EAN code	Pack. weight (kg)	Pieces per pack.	Pack. per carton	Approx. carton weight (Kg)	Shelf life (days)	Packs per layer	Layers per pallet	Boxes per pallet
42270	nr 8006473000600	0,25	3	12	3,0	540	16	14	224

Evviva pork/turkey frankfurters, frozen 250g retail

UM	EAN code	Pack. weight (kg)	Pieces per pack.	Pack. per carton	Approx. carton weight (Kg)	Shelf life (days)	Packs per layer	Layers per pallet	Boxes per pallet
42295	nr 8006473006503	0,25	3	12	3,0	540	16	14	224





# FROZEN

# GASTRONOMY

**bulk**



**Frozen rustic turkey skewers IQF bulk**

	UM	EAN code	Pack. weight (kg)	Pieces per pack.	Pack. per carton	Approx. carton weight (Kg)	Shelf life (days)	Packs per layer	Layers per pallet	Boxes per pallet
<b>31417</b>	Kg	-	5	31	1	5	450	4	15	60

**Frozen turkey skewers IQF bulk**

<b>31415</b>	Kg	-	5	37	1	5	450	4	15	60
--------------	----	---	---	----	---	---	-----	---	----	----



**Frozen chicken roll bulk**

	UM	EAN code	Pack. weight (kg)	Pieces per pack.	Pack. per carton	Approx. carton weight (Kg)	Shelf life (days)	Packs per layer	Layers per pallet	Boxes per pallet
<b>30802</b>	Kg	-	7,4	12	1	7,4	450	4	12	48

**Frozen turkey breast roll bulk**

<b>31806</b>	Kg	-	12	6	1	12	450	4	12	48
--------------	----	---	----	---	---	----	-----	---	----	----

**Frozen turkey roll bulk**

<b>31804</b>	Kg	-	7,4	12	1	7,4	450	4	12	48
--------------	----	---	-----	----	---	-----	-----	---	----	----



**Frozen classic turkey burgers bulk**

	UM	EAN code	Pack. weight (kg)	Pieces per pack.	Pack. per carton	Approx. carton weight (Kg)	Shelf life (days)	Packs per layer	Layers per pallet	Boxes per pallet
<b>31419</b>	Kg	-	2,4	24	1	2,4	450	10	11	110

**Frozen turkey/chicken sausage bulk**

	UM	EAN code	Pack. weight (kg)	Pieces per pack.	Pack. per carton	Approx. carton weight (Kg)	Shelf life (days)	Packs per layer	Layers per pallet	Boxes per pallet
<b>30622</b>	Kg	-	2,8	40	2	5,6	450	4	15	60

**Frozen meatballs bulk**

<b>30624</b>	Kg	-	1	53	3	3	450	10	11	110
--------------	----	---	---	----	---	---	-----	----	----	-----

**Frozen pork sausages bulk**

<b>30623</b>	Kg	-	2,8	40	2	5,6	450	4	15	60
--------------	----	---	-----	----	---	-----	-----	---	----	----



# FROZEN



**Frozen chicken fillet cutlets, 2,5kg bulk**

	UM	EAN code	Pack. weight (kg)	Pieces per pack.	Pack. per carton	Approx carton weight (Kg)	Shelf life (days)	Packs per layer	Layers per pallet	Boxes per pallet
<b>30751</b>	Kg	-	2,5	25	1	2,5	450	12	12	144

**Frozen escalopes with spinach, 2,5kg bulk**

<b>30752</b>	Kg	-	2,5	25	1	2,5	450	12	12	144
--------------	----	---	-----	----	---	-----	-----	----	----	-----

**Frozen rustic chicken cutlets, 2,5kg bulk**

<b>30859</b>	Kg	-	2,5	18	1	2,5	450	12	12	144
--------------	----	---	-----	----	---	-----	-----	----	----	-----

**Frozen Raffinata chicken cutlets, 2,5kg bulk**

<b>30860</b>	Kg	-	2,5	17	1	2,5	450	12	12	144
--------------	----	---	-----	----	---	-----	-----	----	----	-----

**Frozen chicken cutlets, 2,5kg bulk**

<b>30851</b>	Kg	-	2,5	25	1	2,5	450	12	12	144
--------------	----	---	-----	----	---	-----	-----	----	----	-----

**Frozen chicken crunchy cutlets, 2,5kg bulk**

<b>30881</b>	kg	-	2,5	25	1	2,5	450	12	12	144
--------------	----	---	-----	----	---	-----	-----	----	----	-----

**Frozen GranBurger, 2,5kg bulk**

<b>30888</b>	kg	-	2,5	15	1	2,5	450	12	12	144
--------------	----	---	-----	----	---	-----	-----	----	----	-----

**Thin-cut cutlet in pizzaiola sauce, 2,5kg, frozen bulk**

<b>30913</b>	kg	-	2,55	17	1	2,55	450	12	12	144
--------------	----	---	------	----	---	------	-----	----	----	-----



**Frozen chicken nuggets, 2,5 kg bulk**

	UM	EAN code	Pack. weight (kg)	Pieces per pack.	Pack. per carton	Approx carton weight (Kg)	Shelf life (days)	Packs per layer	Layers per pallet	Boxes per pallet
<b>30754</b>	Kg	-	2,5	128	1	2,5	450	12	12	144

**Frozen chicken and spinach nuggets, 2,5 kg bulk**

<b>30879</b>	Kg	-	2,5	131	1	2,5	450	12	12	144
--------------	----	---	-----	-----	---	-----	-----	----	----	-----

**Frozen chicken speck and Emmenthal nuggets, 2,5 kg bulk**

<b>30880</b>	Kg	-	2,5	131	1	2,5	450	12	12	144
--------------	----	---	-----	-----	---	-----	-----	----	----	-----

**Frozen Jambieu, 2,5 kg bulk**

	UM	EAN code	Pack. weight (kg)	Pieces per pack.	Pack. per carton	Approx carton weight (Kg)	Shelf life (days)	Packs per layer	Layers per pallet	Boxes per pallet
<b>30890</b>	Kg	-	2,5	38	1	2,5	450	12	12	144

**Frozen chicky sticks, 2,5 kg bulk**

<b>30853</b>	Kg	-	2,5	167	1	2,5	450	12	12	144
--------------	----	---	-----	-----	---	-----	-----	----	----	-----

**Frozen cooked chicken wings, 2,5 kg bulk**

<b>30731</b>	Kg	-	2,5	62	1	2,5	450	12	12	144
--------------	----	---	-----	----	---	-----	-----	----	----	-----

**Crispy meatballs, 3kg, frozen bulk**

<b>30667</b>	Kg	-	1	48	3	3	450	12	12	144
--------------	----	---	---	----	---	---	-----	----	----	-----

# BREADED

bulk



**Frozen Cordon bleu ham and cheese, 2,5 kg bulk**

	UM	EAN code	Pack. weight (kg)	Pieces per pack.	Pack. per carton	Approx carton weight (Kg)	Shelf life (days)	Packs per layer	Layers per pallet	Boxes per pallet
<b>30753</b>	Kg	-	2,5	20	1	2,5	450	12	12	144



**Frozen fried chicken 2,5 kg bulk**

	UM	EAN code	Pack. weight (kg)	Pieces per pack.	Pack. per carton	Approx carton weight (Kg)	Shelf life (days)	Packs per layer	Layers per pallet	Boxes per pallet
<b>30694</b>	Kg	-	2,5	50	1	2,5	450	12	12	144

**Frozen Mex Chicken 2,5 kg bulk**

	UM	EAN code	Pack. weight (kg)	Pieces per pack.	Pack. per carton	Approx carton weight (Kg)	Shelf life (days)	Packs per layer	Layers per pallet	Boxes per pallet
<b>30695</b>	Kg	-	2,5	125	1	2,5	450	12	12	144





# FROZEN

# COOKED SPECIALITIES

bulk



**Spicy wings, 2,5kg bulk**

	UM	EAN code	Pack. weight (kg)	Pieces per pack.	Pack. per carton	Approx carton weight (Kg)	Shelf life (days)	Packs per layer	Layers per pallet	Boxes per pallet
<b>30742</b>	Kg	-	2,5	68	1	2,5	450	12	12	144

**Frozen cooked breaded chicken wings, 2,5kg bulk**

<b>30731</b>	Kg	-	2,5	62	1	2,5	450	12	12	144
--------------	----	---	-----	----	---	-----	-----	----	----	-----

**Frozen kebab, 2,5kg bulk**

<b>30637</b>	Kg	-	2,5	-	1	2,5	450	12	12	144
--------------	----	---	-----	---	---	-----	-----	----	----	-----

**Frozen sliced chicken, 2,5kg bulk**

<b>30638</b>	Kg	-	2,5	-	1	2,5	450	12	12	144
--------------	----	---	-----	---	---	-----	-----	----	----	-----

**Frozen chicken strips, 2,5kg bulk**

<b>30639</b>	Kg	-	2,5	-	1	2,5	450	12	12	144
--------------	----	---	-----	---	---	-----	-----	----	----	-----



**Frozen mini chicken and vegetable burgers, 2,5kg bulk**

	UM	EAN code	Pack. weight (kg)	Pieces per pack.	Pack. per carton	Approx carton weight (Kg)	Shelf life (days)	Packs per layer	Layers per pallet	Boxes per pallet
<b>40302</b>	Kg	-	2,5	-	-	2,5	450	-	-	-



**Chicken fillet, vegetable and quinoa burgers, 2,5kg bulk**

	UM	EAN code	Pack. weight (kg)	Pieces per pack.	Pack. per carton	Approx carton weight (Kg)	Shelf life (days)	Packs per layer	Layers per pallet	Boxes per pallet
<b>40303</b>	Kg	-	2,5	-	-	2,5	450	-	-	-



# FROZEN

# MISTER MEAT

bulk



**Frozen beefburgers bulk**

	UM	EAN code	Approx. package Kg	Pieces per package	Packages per carton	Approx. carton weight Kg	Shelf life (days)
<b>36742</b>	Kg	98006473367423	3	30	1	3	540

**Frozen beefburgers 180g bulk**

<b>36743</b>	Kg	98006473367430	2,88	16	2	5,76	730
--------------	----	----------------	------	----	---	------	-----

**Frozen beefburgers Dry-Aged bulk**

<b>36744</b>	Kg	98006473367447	3,6	20	1	3,6	365
--------------	----	----------------	-----	----	---	-----	-----



**Frozen rack of lamb bulk**

	UM	EAN code	Approx. package Kg	Pieces per package	Packages per carton	Approx. carton weight Kg	Shelf life (days)
<b>36117</b>	Kg	98006473361179	1,5	1	10	15	1090



**Frozen leg of lamb bulk**

	UM	EAN code	Approx. package Kg	Pieces per package	Packages per carton	Approx. carton weight Kg	Shelf life (days)
<b>36120</b>	Kg	98006473361209	2	1	5	10	720



# FROZEN

# MISTER MEAT

bulk



**Frozen shoulder of lamb pieces** bulk

	UM	EAN code	Approx. package Kg	Pieces per package	Packages per carton	Approx. carton weight Kg	Shelf life (days)
<b>36121</b>	Kg	98006473361216	5	36	1	5	720



**Frozen pork chops, 180g** bulk

	UM	EAN code	Approx. package Kg	Pieces per package	Packages per carton	Approx. carton weight Kg	Shelf life (days)
<b>36204</b>	Kg	98006473362046	5	28	1	5	720



**Frozen international pork loin** bulk

	UM	EAN code	Approx. package Kg	Pieces per package	Packages per carton	Approx. carton weight Kg	Shelf life (days)
<b>36203</b>	Kg	98006473362039	18	3	1	18	720



**Frozen pork shank, half** bulk

	UM	EAN code	Approx. package Kg	Pieces per package	Packages per carton	Approx. carton weight Kg	Shelf life (days)
<b>36221</b>	Kg	98006473362213	0,7	1	10	7	540

**Frozen pork shank** bulk

<b>36220</b>	Kg	98006473362206	1,2	2	5	6	540
--------------	----	----------------	-----	---	---	---	-----















[WWW.AMADORI.IT](http://WWW.AMADORI.IT)